

The University of Lethbridge

Lethbridge, Alberta, Canada

Research Park Precinct Plan, June 2000

Life Sciences Building Conceptual Design Guidelines

JOHN ANDREWS INTERNATIONAL PTY. LIMITED
ARCHITECTS & PLANNERS

RICHARD STRONG - LANDSCAPE ARCHITECTURE
DOUGLAS MCKAY - URBAN DESIGN

PRECINCT PLAN CONCEPT DESIGN GUIDELINES

IMPLEMENTATION

1 PRECINCT DEVELOPMENT

The June 2000 Master Plan establishes 9 Precincts of the campus as areas of future development and conservation:-

1. COULEE PRECINCT

This precinct includes the coulee areas along the river bank excluding those that have been built upon.

2. OLDMAN PRECINCT

This precinct includes University hall, the Center for the Arts, their associated service roads, parking areas and landscaping.

3. ENTRANCE PRECINCT

This precinct includes L.I.N.C. Building, Gymnasium / Student Union, the oval, Anderson Hall, the proposed Food Services / Staff Club / Visitor Center, Aperture Circle and associated service roads, parking areas and landscaping.

4. ACADEMIC FACILITIES PRECINCT

This precinct includes the proposed Academic Facilities Complex, Theater / Art Gallery, Convention Centre, reconfigured West Carpark, the major sections of Valley Road and Aperture Drive adjoining University Drive, service areas and associated landscaping.

5. RESEARCH PARK PRECINCT

This precinct includes the proposed Research Park Complex and its first stage, the Life Science Building, associated parking service areas, Wetlands and other landscape areas.

6. APERTURE RESIDENTIAL PARK PRECINCT

This precinct includes existing and proposed residential buildings and associated roads, parking areas and landscaping.

7. LAKE PRECINCT

This precinct includes the irrigation lake, the proposed South Carpark, associated roads and landscaping.

8. CULTURAL / SERVICE FACILITIES PRECINCT

This precinct includes the proposed Judo / Japanese Cultural Center, the relocated Physical Plant, new Fire Station and associated roads and landscaping.

9. FIELD HOUSE PRECINCT

This precinct includes the proposed Field House, outdoor field sport courts and associated landscaping.

2 THE MASTER PLAN

The June 2000 Master Plan establishes a framework for future growth and change of the University of Lethbridge. As outlined in the introduction, it is a working document for the University of Lethbridge. Its preparation has involved the development of preliminary design concepts for all of the new precincts of the campus and the detailed conceptual design of the Research Park Precinct and its first stage project, the Life Sciences Building. This is documented in a supplementary report. A detailed Precinct Plan will be developed for each precinct followed up by Conceptual Design Guidelines for each new project as funding becomes available for future development.

The Master Plan itself will need to be reviewed and updated as the detailed design of each of the precincts develops and separate studies relating to traffic and landscape are prepared to ensure that the Master Plan keeps abreast of changes to university requirements.

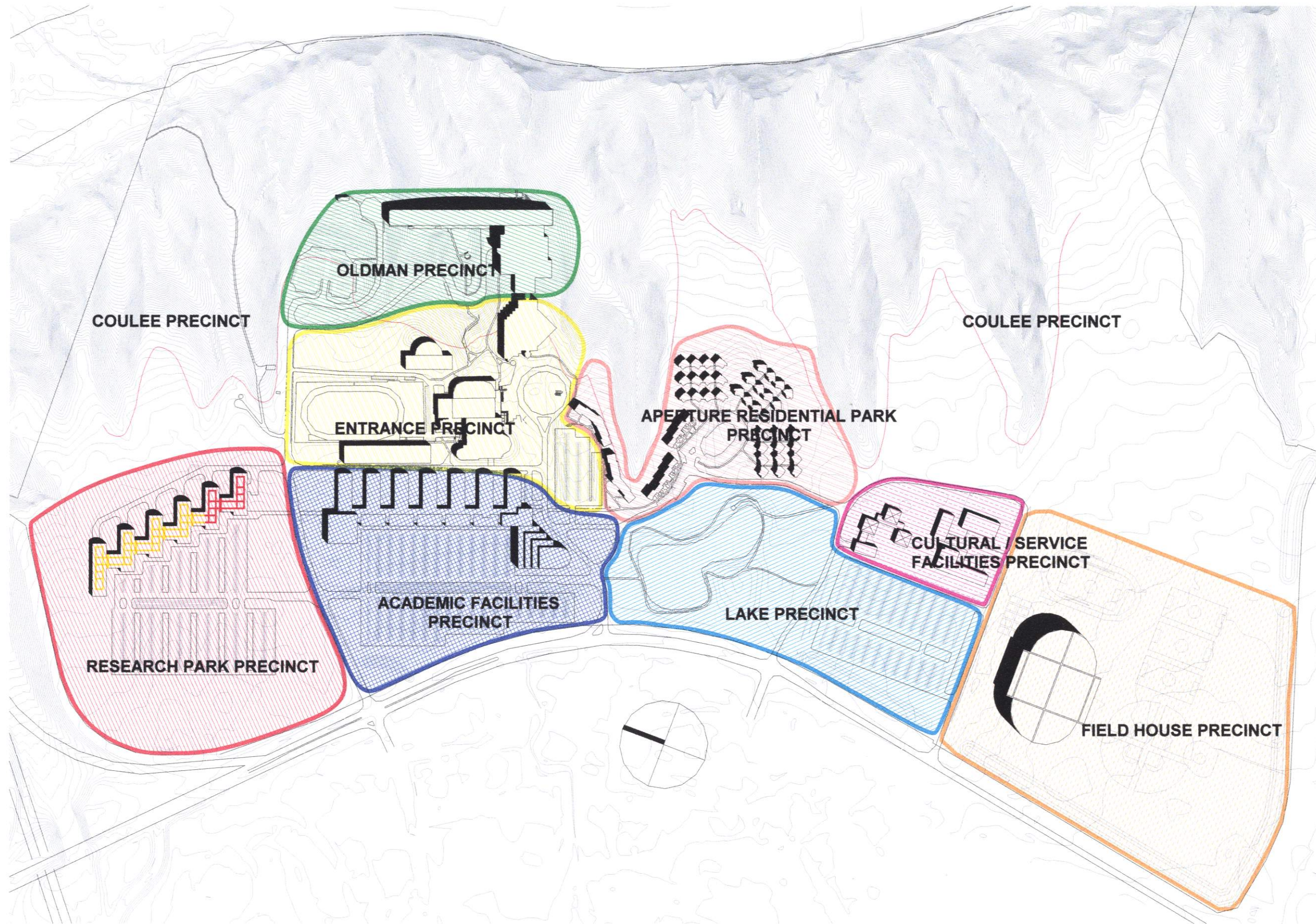


Fig. 1 PRECINCT STRUCTURE

3 PRECINCT PLANS

To effectively implement the macro controls established by the master plan, detailed guidelines for each precinct will need to be developed. They will examine the neighbourhood in detail, and in particular:-

- a. The relationship and positioning of the Precinct in the Master Plan
- b. The program for the Precinct
- c. The local environment
- d. The existing infrastructure within the Precinct
- e. The inter-relationship of built elements within the Precinct

Planning and design studies carried out will further develop programs, parameters and palettes which, within each Precinct, will provide guidelines for:-

1. Built elements within each Precinct
2. Spaces between and surrounding each built element
3. Building footprints and profiles
4. Pedestrian movement in relation to the Master Plan
5. Vehicular movement within each precinct together with parking and servicing
6. Solar access
7. Weather protection
8. Exterior lighting
9. Hard and soft landscaping

4 CONCEPTUAL DESIGN GUIDELINES, PRECINCT COMPONENTS

To ensure successful integration with the Master Plan and with the applicable Precinct Plan, conceptual design guidelines for each precinct component will be developed, further defining:-

1. Individual and particular programs for each component
2. Key requirements of local, provincial and national authorities
3. Built footprints outlined by the Precinct Plan
4. Built heights and setbacks
5. Built form and open space as determined by the Master Plan
6. Structure and services as determined by building function and economics
7. Pedestrian and vehicular movement in relation to other elements in the precinct Plan
8. Passive and active environmental controls incorporating low energy principles where possible
9. Optimum location of facilities within the framework developed
10. A palette of interior and exterior materials and finishes

5 PROJECT REVIEW

Conceptual Design Guidelines prepared by the master Planner will provide a detailed brief for each campus project which will be implemented by local consultants. At the completion of the design development stage, the project will be reviewed by the master Planner to ensure the intent of the conceptual design phase has been implemented prior to the completion of construction documents.

6 MASTER PLAN REVIEW

The Master Plan will be updated to incorporate developed Precinct Plans and Conceptual Design Guidelines for individual projects.

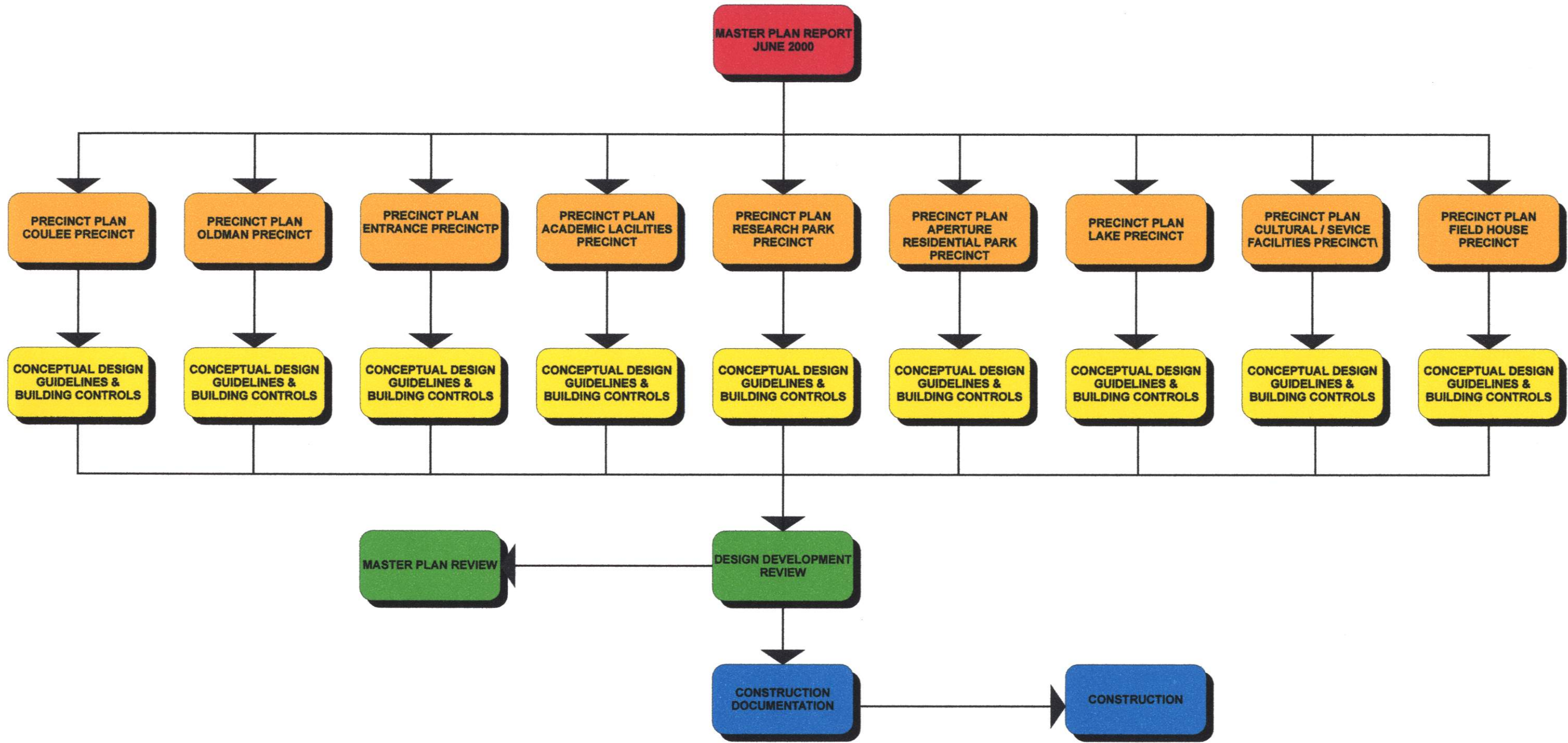


Fig. 2 IMPLEMENTATION PROCESS

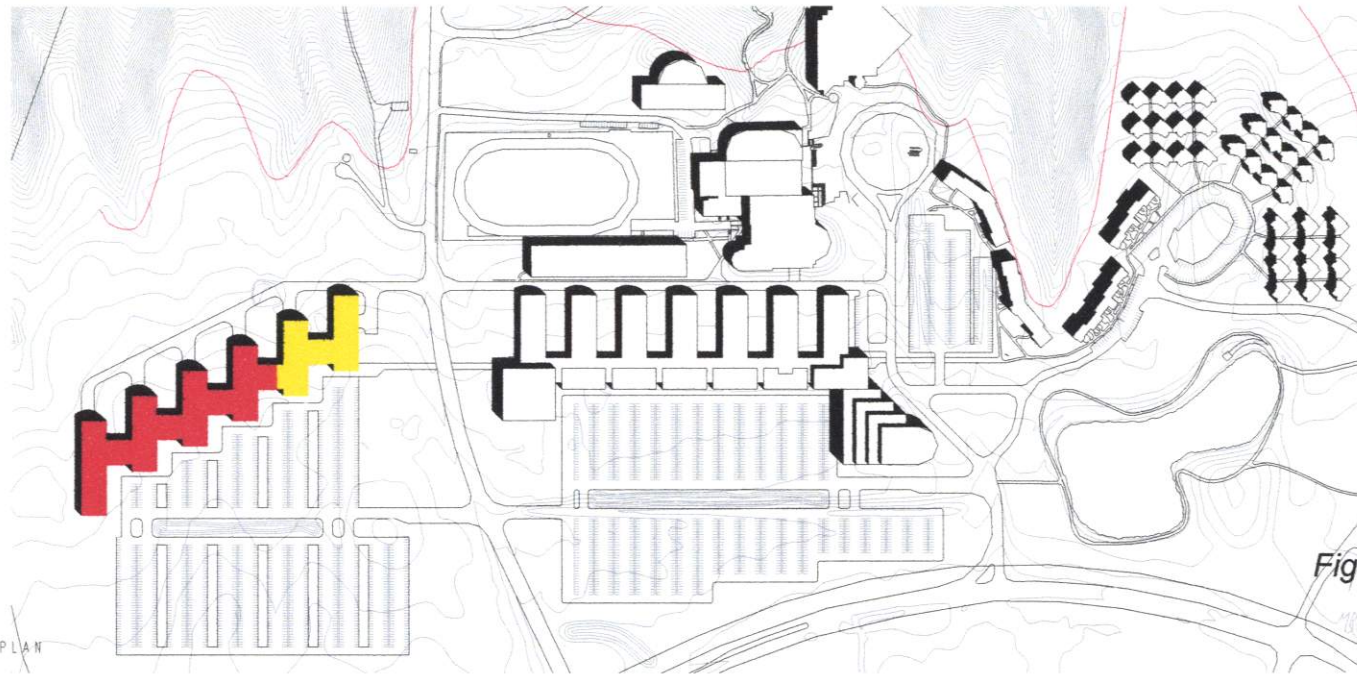


Fig. 3 PRECINCT PLAN PREPARED BY JOHN ANDREWS INTERNATIONAL

01 PRECINCT PLAN IN CONTEXT OF MASTER PLAN
SCALE 1:200

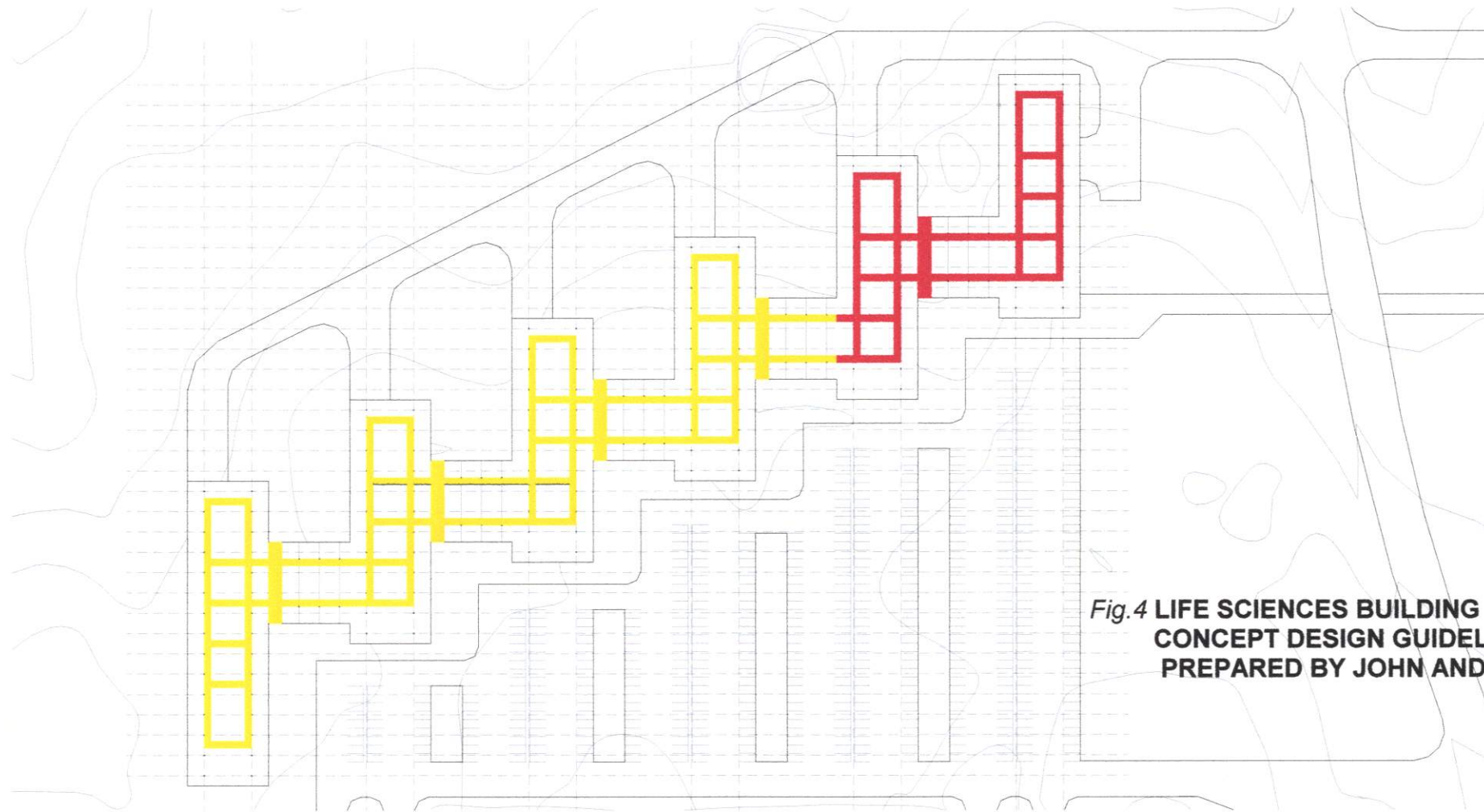


Fig. 4 LIFE SCIENCES BUILDING CONCEPT DESIGN GUIDELINES PREPARED BY JOHN ANDREWS INTERNATIONAL

02 PRECINCT PLAN
SCALE 1:500

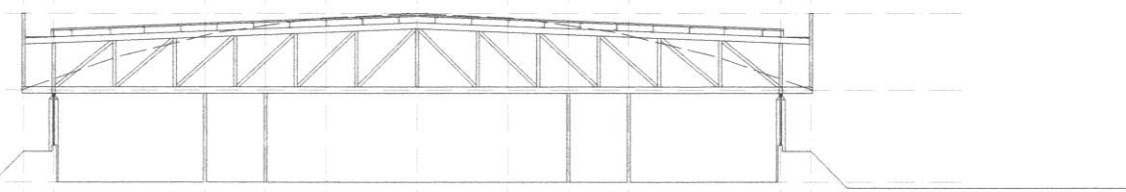
THE UNIVERSITY OF LETHBRIDGE
ALBERTA, CANADA
PROPOSED LIFE SCIENCES BUILDING & RESEARCH PARK

Architects + Urban Planners
1000-1000 ROAD
MARKHAM, ONTARIO L3R 9V7
CANADA
TEL: 905.477.1000
FAX: 905.477.1001
WWW.JAINTERNATIONAL.COM

JOHN ANDREWS INTERNATIONAL
1000-1000 ROAD
MARKHAM, ONTARIO L3R 9V7

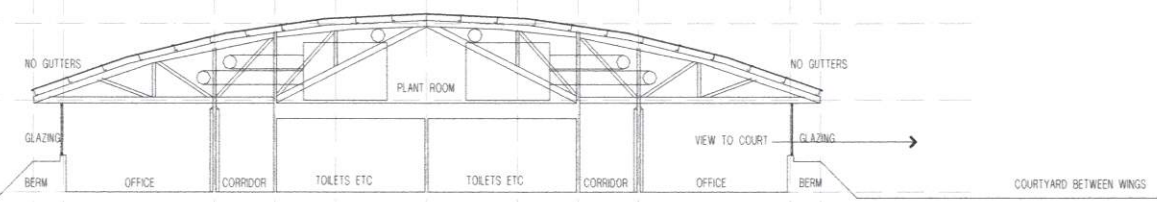


- 1 EXCESSIVE STRUCTURE
- 2 UNNECESSARY MATERIAL IN OUT OF SCALE FASCIA
- 3 BOX GUTTER - POTENTIAL FOR BLOCKING & LEAKING
- 4 MULTIPLE COLUMN SUPPORTS
- 5 WHEN WIDER THAN 24 METRES EXTRA CORRIDOR REQUIRED
- 6 FIXED CEILING HEIGHT REGULATES ROOM SIZES

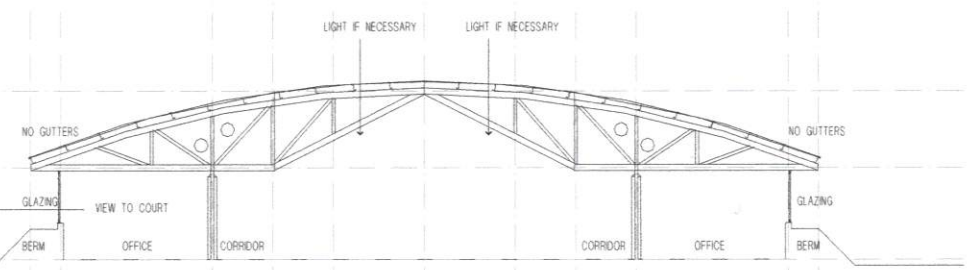


01 SECTION THRU FLAT ROOF TRUSS
SCALE 1/8"

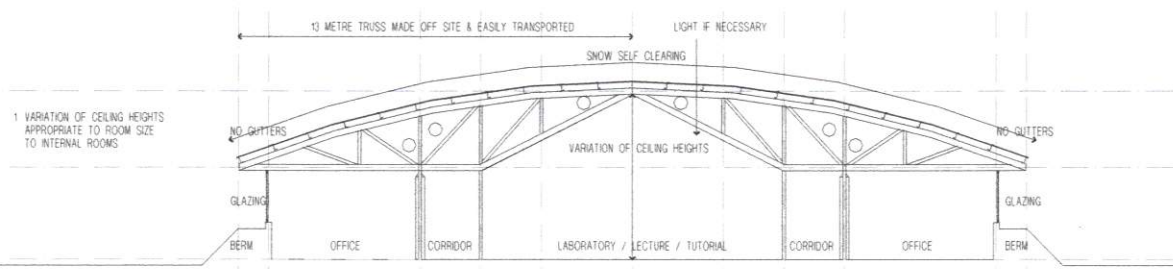
- 1 PLANT ROOM CAN BE LOCATED SPECIFICALLY - i.e. OVER TOILETS WHICH REQUIRE LESS HEADROOM



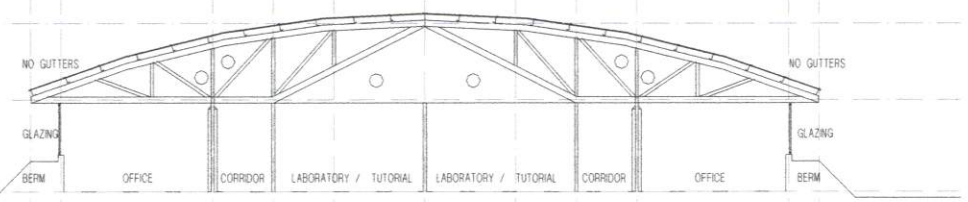
- 1 LIGHT CAN BE INTRODUCED AT THE CONFLUENCE OF CORRIDORS USING POLYCARBONATE SHEETING IN SAME PLANE AS ROOFING
- 2 LIGHT CAN BE INTRODUCED TO ANY INTERNAL SPACE IF REQUIRED



02 SECTION THRU CURVED ROOF TRUSS - 1
SCALE 1/8"



- 1 VARIATION OF CEILING HEIGHTS APPROPRIATE TO ROOM SIZE TO INTERNAL ROOMS



03 SECTION THRU CURVED ROOF TRUSS - 2
SCALE 1/8"

**Fig.5 LIFE SCIENCES BUILDING
CONCEPT DESIGN GUIDELINES
PREPARED BY JOHN ANDREWS**

THE UNIVERSITY OF LETHBRIDGE
MASTER PLAN MARCH 2000



JOHN ANDREWS INTERNATIONAL
1000 10th Ave S.E.
Calgary, Alberta T2C 1A8
Canada
Tel: (403) 243-1111
Fax: (403) 243-1112
www.jandrews.com



MARCH 18, 2000



ELEVATION CONCEPT



Fig.7 LIFE SCIENCES BUILDING ELEVATION
PREPARED BY CONSULTANT ARCHITECT
IN RESPONSE TO UNIVERSITY BRIEF
AND CONCEPT DESIGN GUIDE LINES

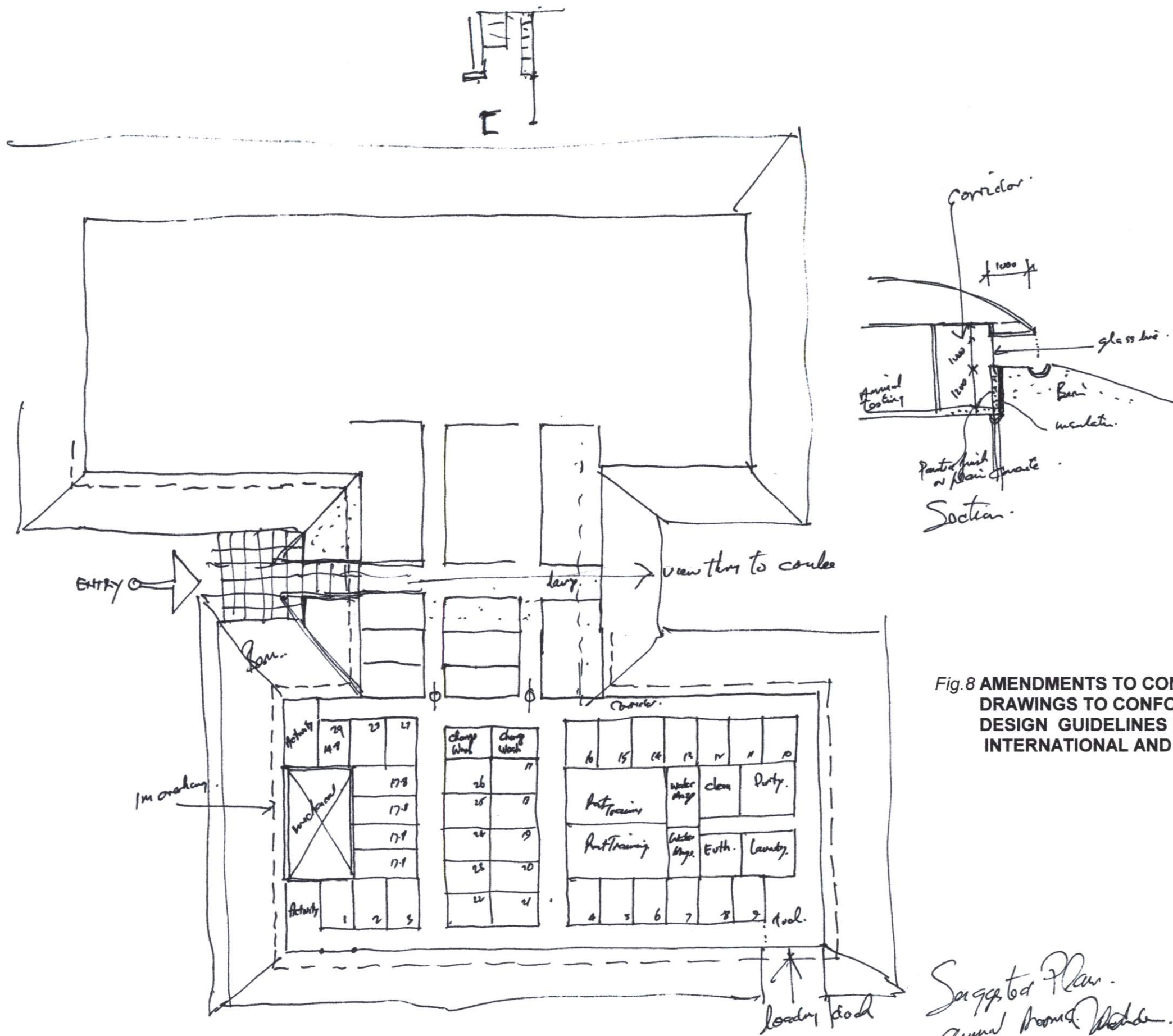


Fig.8 AMENDMENTS TO CONSULTANT ARCHITECT'S DRAWINGS TO CONFORM TO CONCEPT DESIGN GUIDELINES BY JOHN ANDREWS INTERNATIONAL AND THE UNIVERSITY

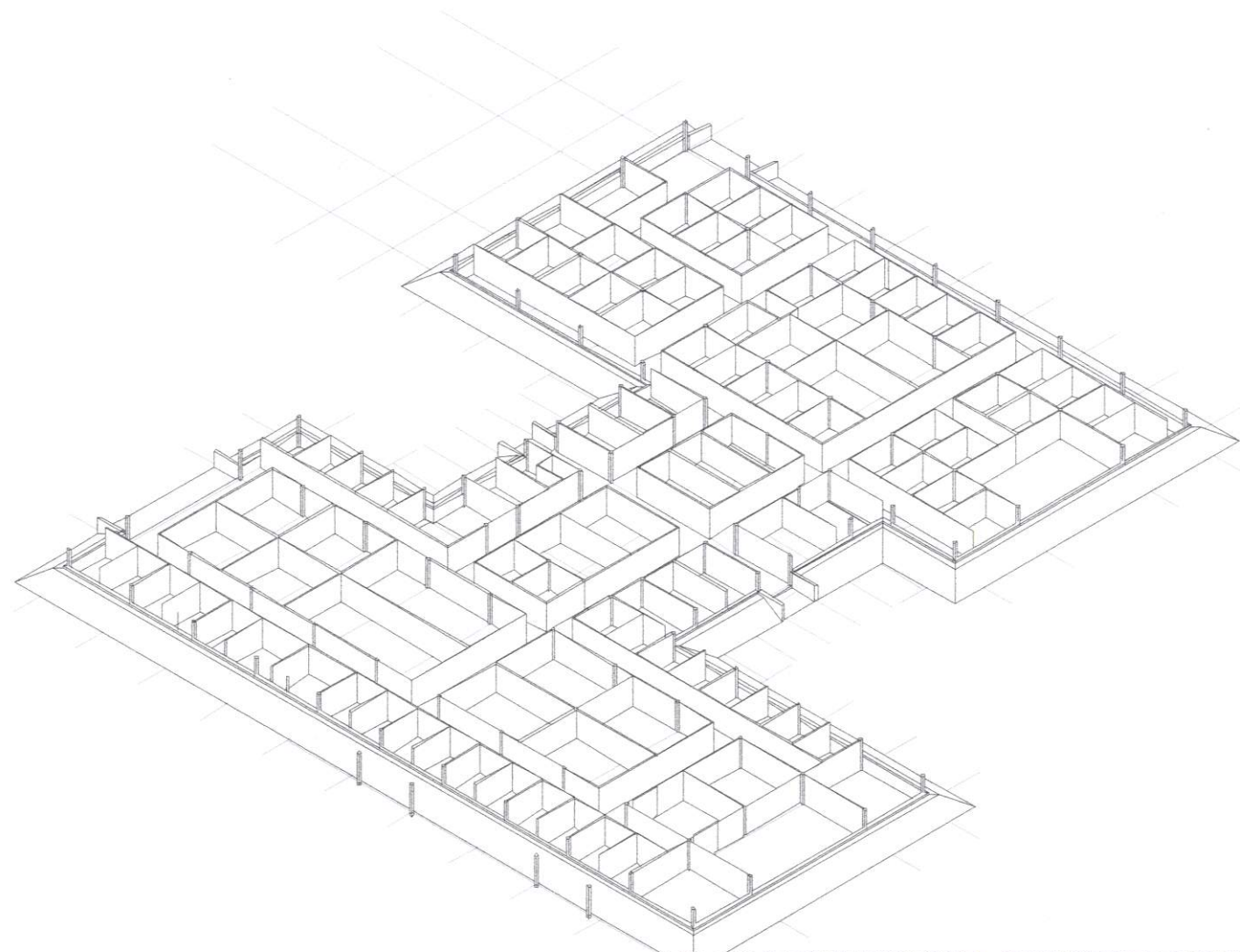
Suggested Plan.
 Annual Room. [Signature]
 22/3/00

**Fig.9 DEVELOPED DESIGN GUIDELINES
PREPARED BY JOHN ANDREWS INTERNATIONAL
AND RETURNED TO CONSULTANT ARCHITECT
TO PROCEED TO COMPLETED DOCUMENTATION**



THE UNIVERSITY OF LETHBRIDGE
ALBERTA, CANADA
PROPOSED NEUROSCIENCE BUILDING

Architects - Urban Planners
JOHN ANDREWS INTERNATIONAL
1111 10th Street SW
Lethbridge, Alberta T1A 6K4
Canada
Tel: (403) 327-1111
Fax: (403) 327-1112
www.jai.com



**Fig.10 3 DIMENSIONAL COMPUTER MODELLING
BY JOHN ANDREWS INTERNATIONAL
OF DEVELOPED CONCEPT DESIGN**

