

Conceptual Design Services for the Enhancement of the

University Campus Master Plan

University of Lethbridge Main Campus

4401 University Drive Lethbridge, Alberta Canada T1K 3M4



University of Lethbridge Core Campus Expansion Plan (2001)
Brook McIlroy Planning + Urban Design

Key Dates:

RFQu Closing Date: Friday at 3:00pm MDT on April 1, 2011
Anticipated Final Award Date: May 20, 2011

If you received this RFQu directly from a University representative, please submit the [Receipt Confirmation Form](#) immediately as directed to ensure all subsequent information issued by the University, if any, is communicated to you (refer to Schedule D at the close of this document).



4 Response Requirements

Please add the following section:

4.9 Joint Ventures

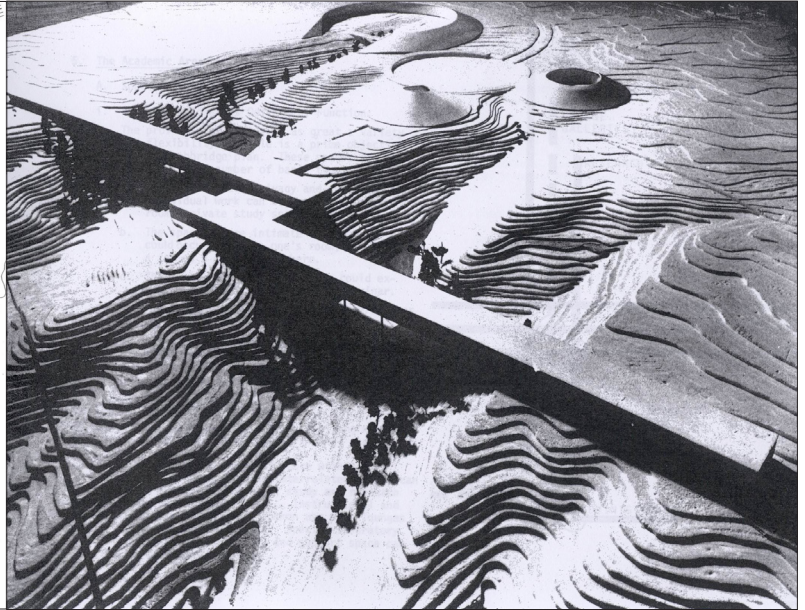
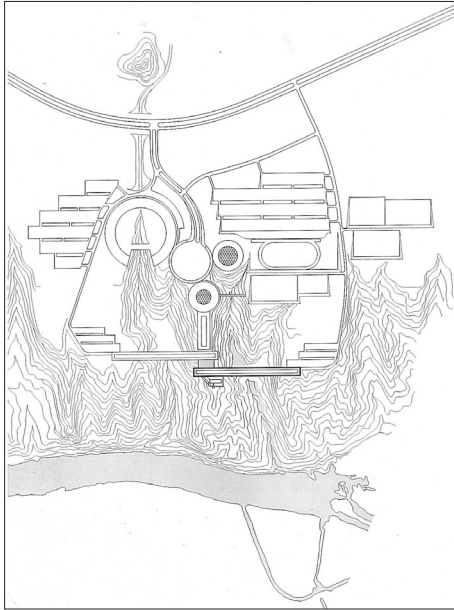
Where the proposal is submitted by a joint venture partnership, an explanation of:

1. How the Joint Venture will be structured, and how it is proposed to proportion and support the risk and responsibilities by the individual companies.
2. Why this partnership was selected, and what advantages the University can expect from the partnership.
3. How the work will be shared between the offices and relate to the nominated personnel for each of the phases/functions.

- END OF ADDENDUM -

Planning & Capital Projects, Facilities

University of Lethbridge □ 4401 University Drive West □ Lethbridge, Alberta T1K 3M4 □ www.uleth.ca



*University of Lethbridge Development Plan (1969)
Erickson / Massey Architects*