



LEE PROJECT ROOM AH177

Instructions and Troubleshooting

TABLE OF CONTENTS

1. INSTRUCTIONS.....	2
1.1 DISPLAY INSTRUCTOR LAPTOP ON ALL SCREENS.....	2
1.2 DISPLAY LOCAL INPUT AT EACH TABLE.....	6
1.3 DISPLAY STUDENT LAPTOP FROM TABLE ON ALL SCREENS.....	10
1.4 DISPLAY DOCUMENT CAMERA ON ALL SCREENS.....	12
1.5 DISPLAY SPECIFIC INPUT AT SPECIFIC TABLE.....	15
1.6 HDMI INPUT AND ADAPTERS.....	17
1.7 SOUND.....	18
1.7.1 Changing Sound Output on a PC.....	19
1.7.2 Changing Sound Output on a Mac.....	21
2. TROUBLESHOOTING.....	22
2.1 Screens will not turn on.....	22
2.2 Dell laptop will not display at screen.....	23
2.3 There is no sound.....	23

1. INSTRUCTIONS

1.1 DISPLAY INSTRUCTOR LAPTOP ON ALL SCREENS

Plug the HDMI connector into your HDMI input on your laptop. You may need an adapter depending on the type of your laptop. The laptops in the laptop cart have an HDMI output.



HDMI and Dell laptop power inputs at instructor station.



Plug-ins are located on the left-hand side of the Dell laptop.



Mini Display port to HDMI adapter on MacBook Air (2013).

On the Crestron control panel, select **Presets**



Select **Instructor's Laptop to all Displays**



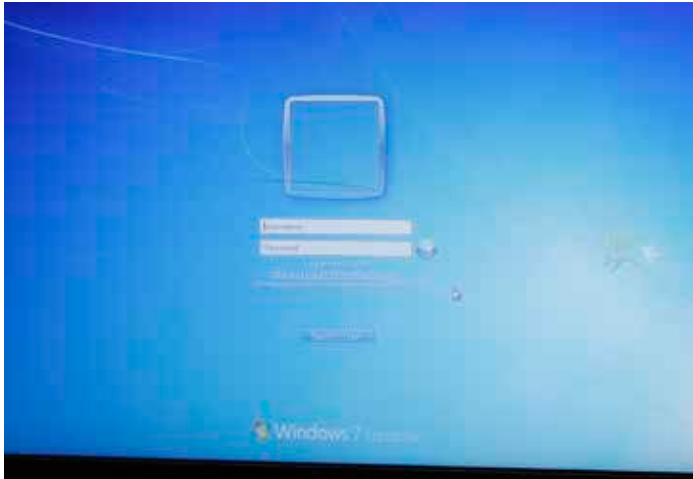
The instructor laptop will now display on all 6 screens in the room.



Example: MacBook



Example: Dell laptop



You may use a laptop from the laptop cart. You can log in to any of the laptops from the laptop cart with your uleth.ca username and password.



After use, please log off.



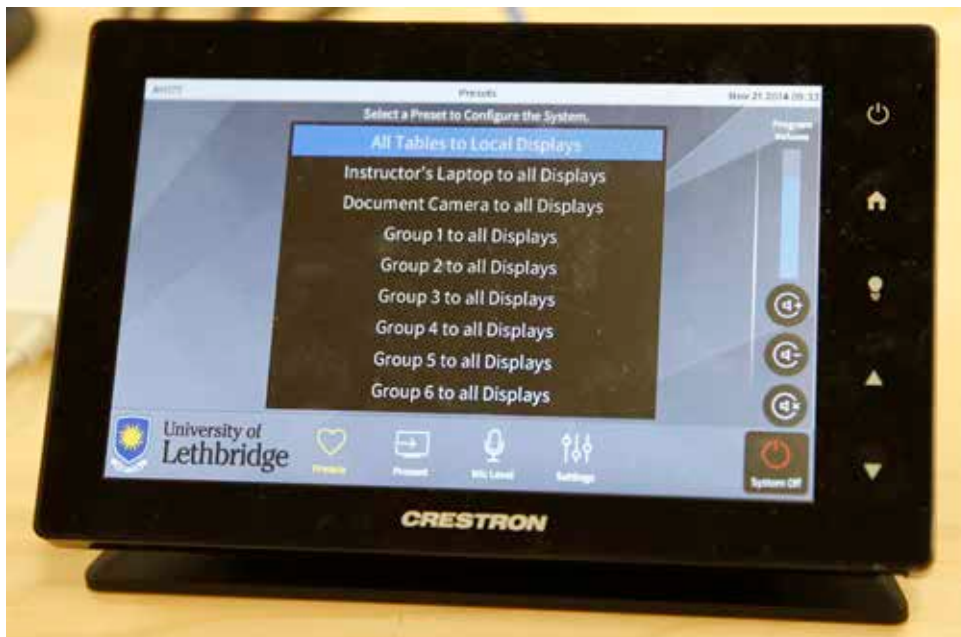
Then return the laptop to the laptop cart and plug it in.

1.2 DISPLAY LOCAL INPUT AT EACH TABLE

On the Crestron control panel, select **Presets**



Select **All Tables to Local Displays**



Now, any input that is plugged in at a table will be displayed on that table's screen.



To display your input, press the PLAY button on the HDMI cable.



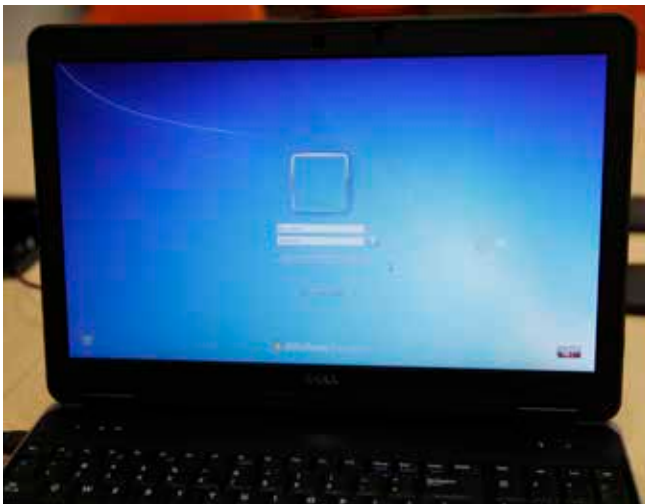
The button will light up Blue, indicating the active input to the display.



To switch inputs at the same table, simply press the PLAY button of any other connected device.

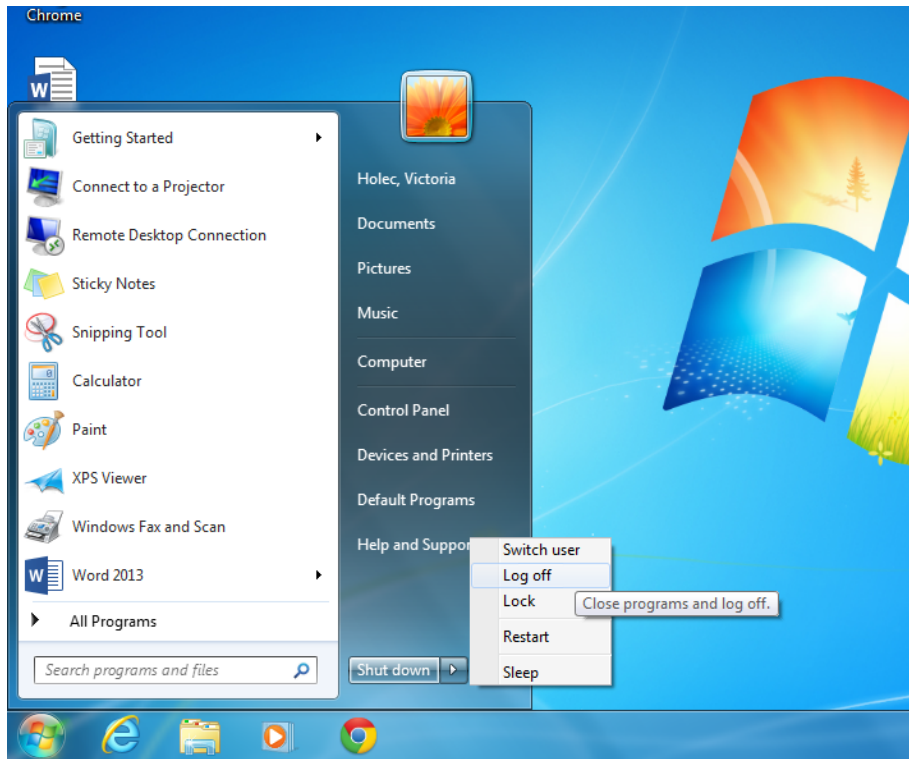


Local inputs are shown at each table.



Students may use the laptop in the laptop cart when their instructor is present. You can log in to any of the laptops from the laptop cart with your uleth.ca username and password.

After use, please log off.

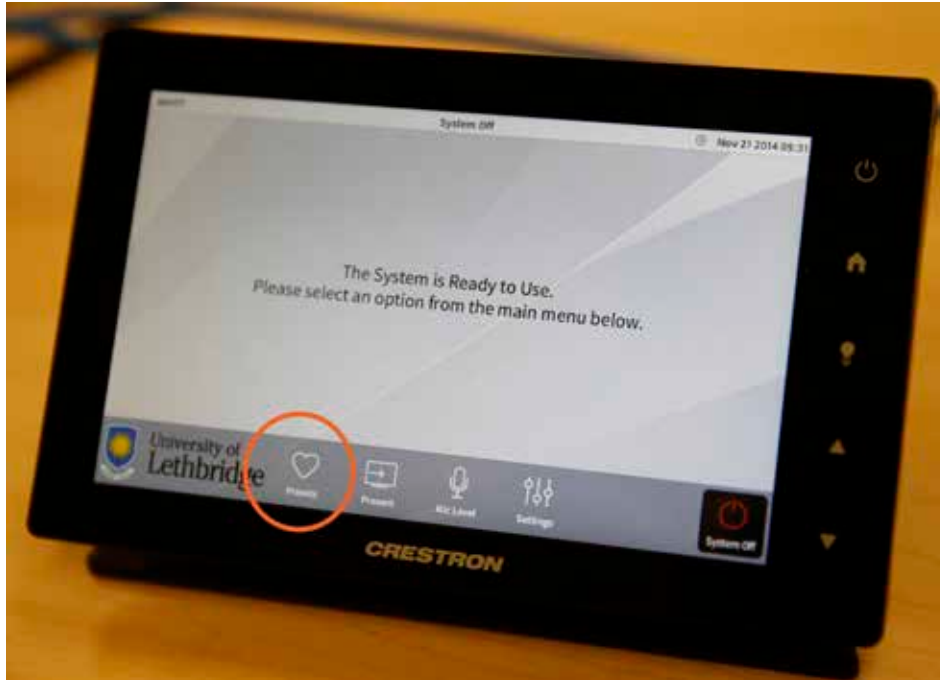


Then return the laptop to the laptop cart and plug it in.



1.3 DISPLAY STUDENT LAPTOP FROM TABLE ON ALL SCREENS

On the Crestron control panel, select **Presets**



If you wish to show Table 1 to all screens, select **Group 1 to all Displays**. If you wish to show Table 2 to all screens, select **Group 2 to all Displays**, and so on.



In the example below, Group 1 (Table 1) is displayed on all screens.



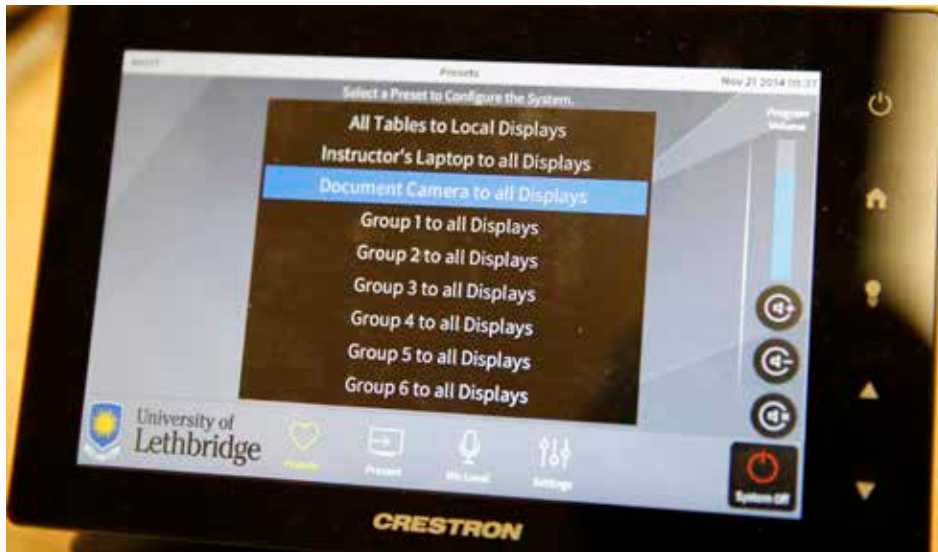
Reminder: The student at the table must press the PLAY button for the input to show up on the screen.

1.4 DISPLAY DOCUMENT CAMERA ON ALL SCREENS

On the Crestron control panel, select **Presets**



Select **Document Camera to all Displays**



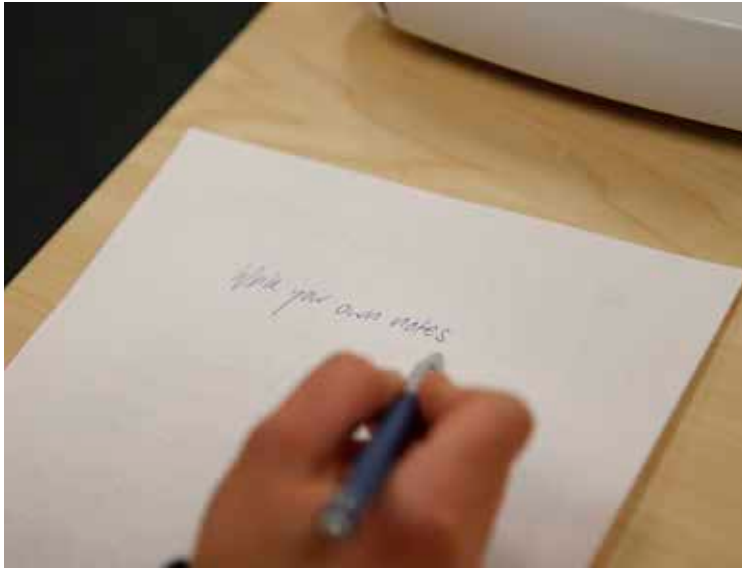
Make sure the Document Camera is turned on (green light).



Position your input underneath the camera.



You can show documents, books, newspapers, or even write your own notes live.



You can see below how the document is displayed on all screens.



1.5 DISPLAY SPECIFIC INPUT AT SPECIFIC TABLE

On the Crestron control panel, select **Present**



The following screen will appear:



Here, you can drag any of the Sources from the top bar to the Table Display Panels.



Example:
Table 1 is displayed at all Table Displays. Dragging Instructor Laptop to Table 5 Display will display the instructor's laptop ONLY at Table 5.

Mix and Match: This will give you the option to swap displays between two tables.



Example:
You can display the input from Table 2 at Table 3, and the input from Table 3 at Table 2, so groups can evaluate their neighbouring group's work.

1.6 HDMI INPUT AND ADAPTERS

Depending on your device, you may need an HDMI adaptor for the HDMI cable.



(1) Built-in HDMI Ports

Dell laptop



MacBook Pro



(2) MacBook Air



Mini-Display to HDMI



(3) iPad/iPhone



30-pin to HDMI



Lightning to HDMI

(4) Android Devices (most)



Micro-USB

Please ensure you have an HDMI port or adapter. Analog signals are not supported.

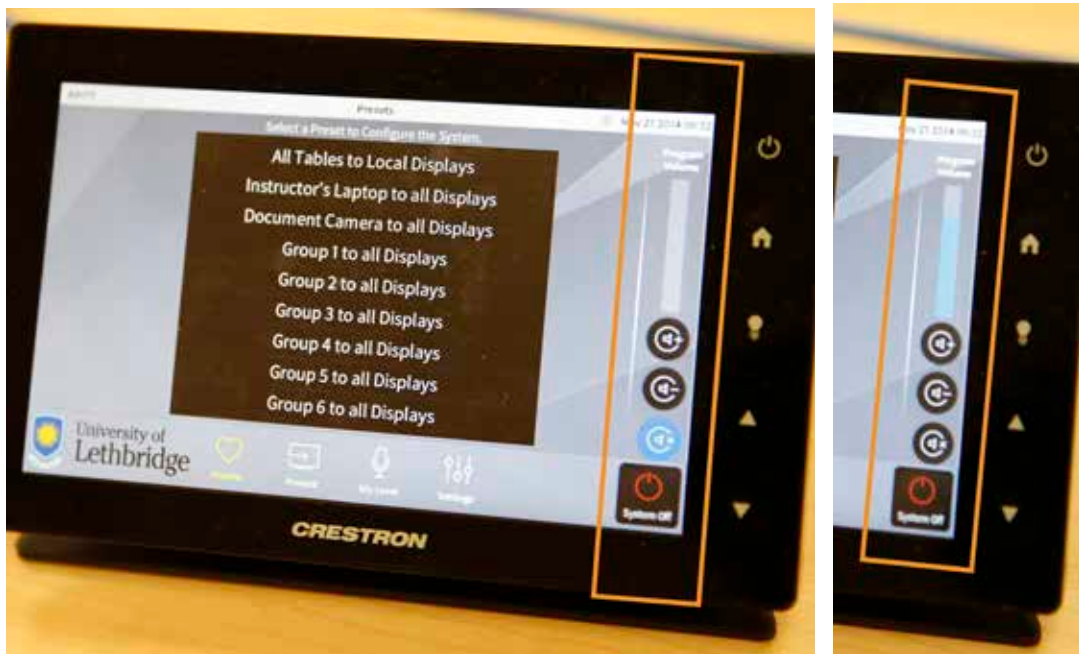
1.7 SOUND

Sound is centrally controlled through the Crestron system for inputs that are displayed on all screens only.

For example:

- Instructor Laptop to all Displays
- Any one Table to all Displays

The sound is controlled on the right hand side of the Crestron screen.



Use the Volume + and Volume - buttons to adjust the volume.

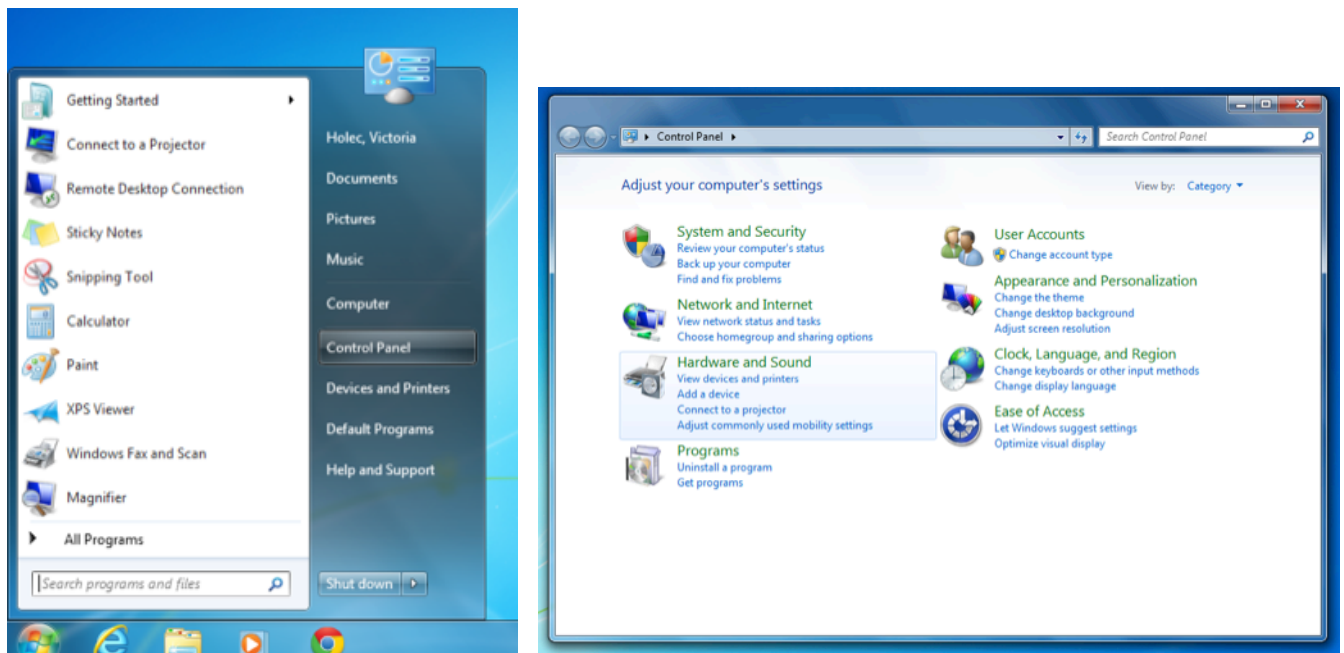
NOTE: You will have to set the default audio output on your laptop to the Crestron Device (see 1.7.1 and 1.7.2).

(For the Dell laptops, this should be the default setting and you shouldn't have to adjust anything.)

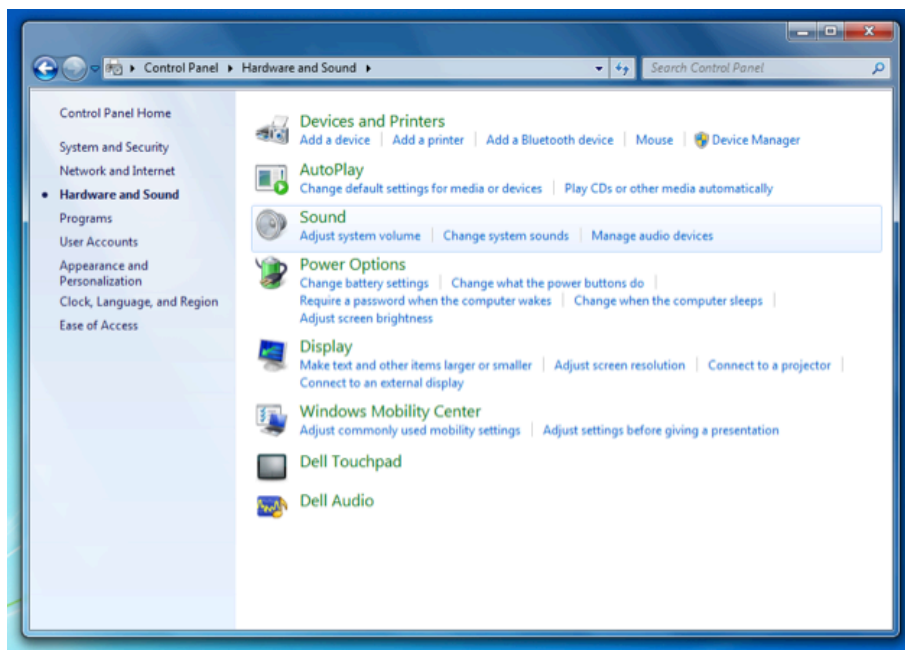
1.7.1 Changing Sound Output on a PC

For the Dell laptops, this should be set by default and you shouldn't have to adjust anything. If you don't get sound, however, it would be a place to double check.

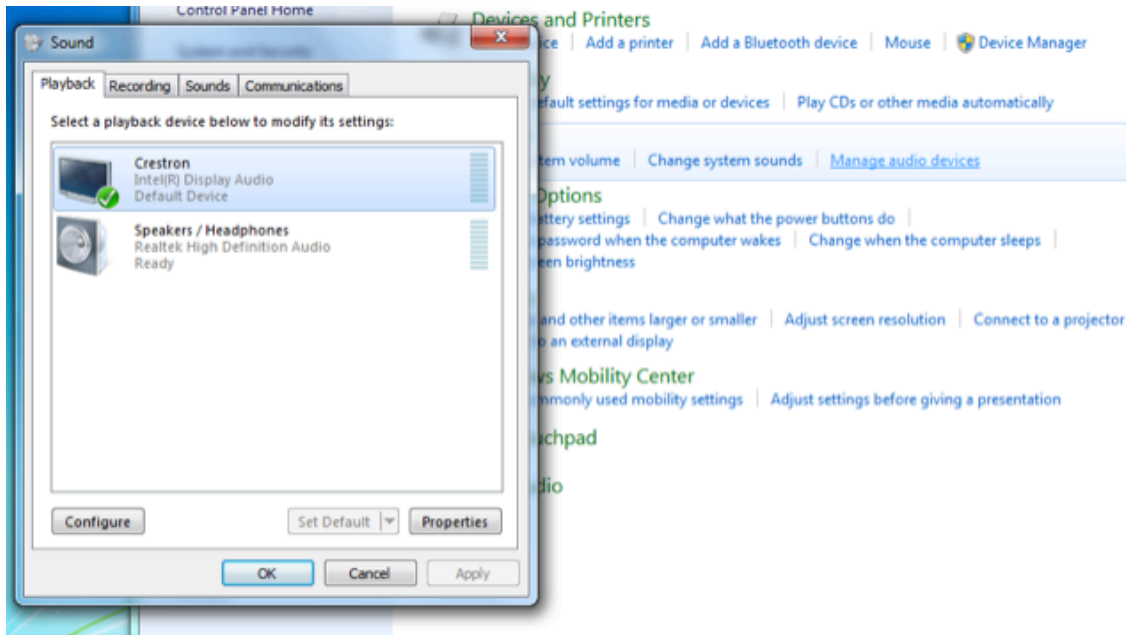
Go to Start > Control Panel. Choose "Hardware and Sound."



Choose Sound > Manage audio device

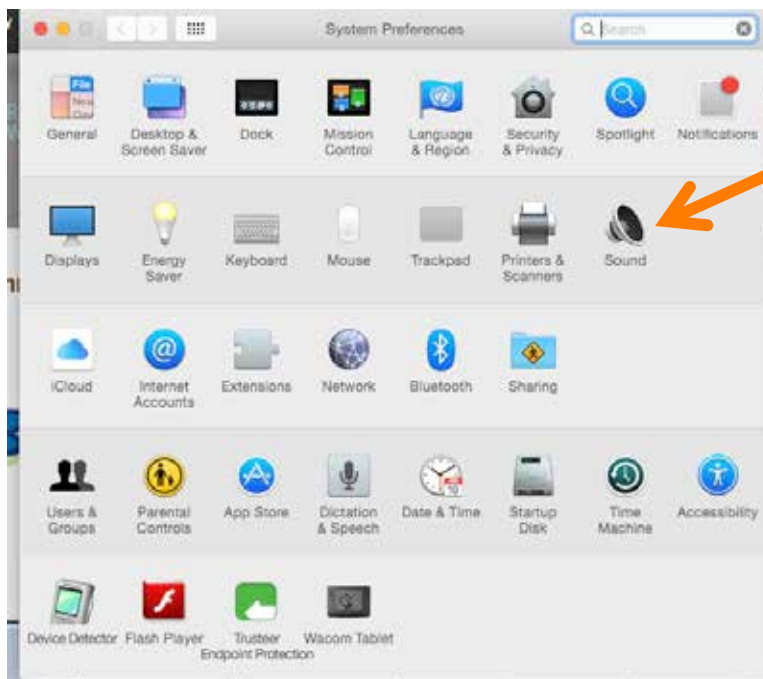
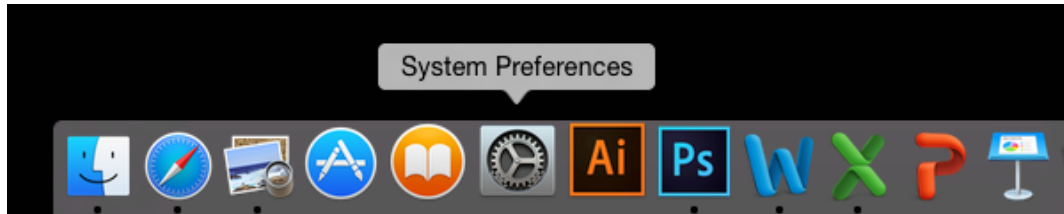


On the "Playback" Tab, select "Crestron"

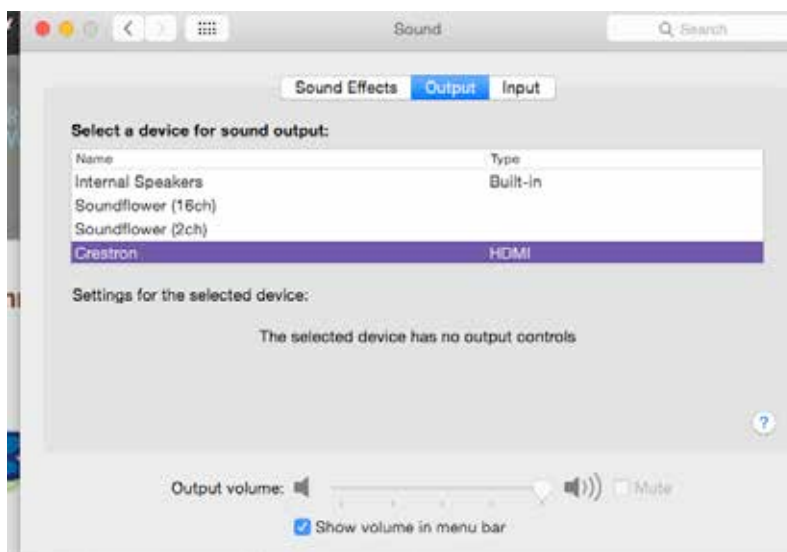


1.7.2 Changing Sound Output on a Mac

Go to "System Preferences"



Select "Sound"



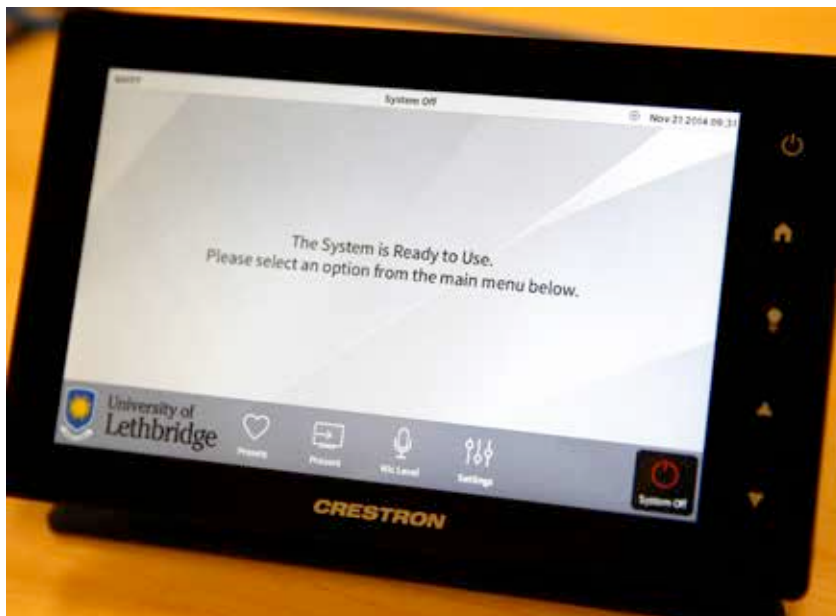
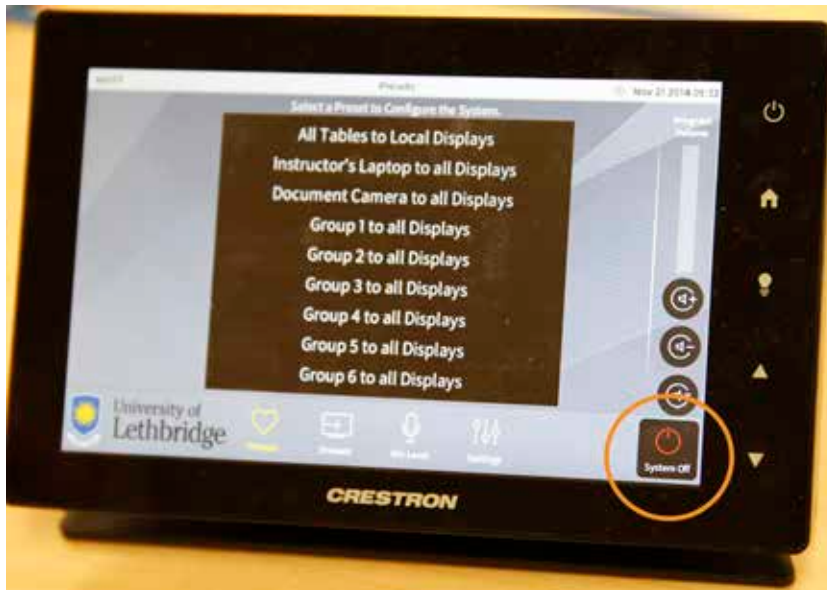
On the "Output" Tab, select "Crestron"

2. TROUBLESHOOTING

If any of the problems cannot be resolved with the instructions below, please call technical support at **1856** (403.380.1856 from a non-campus phone).

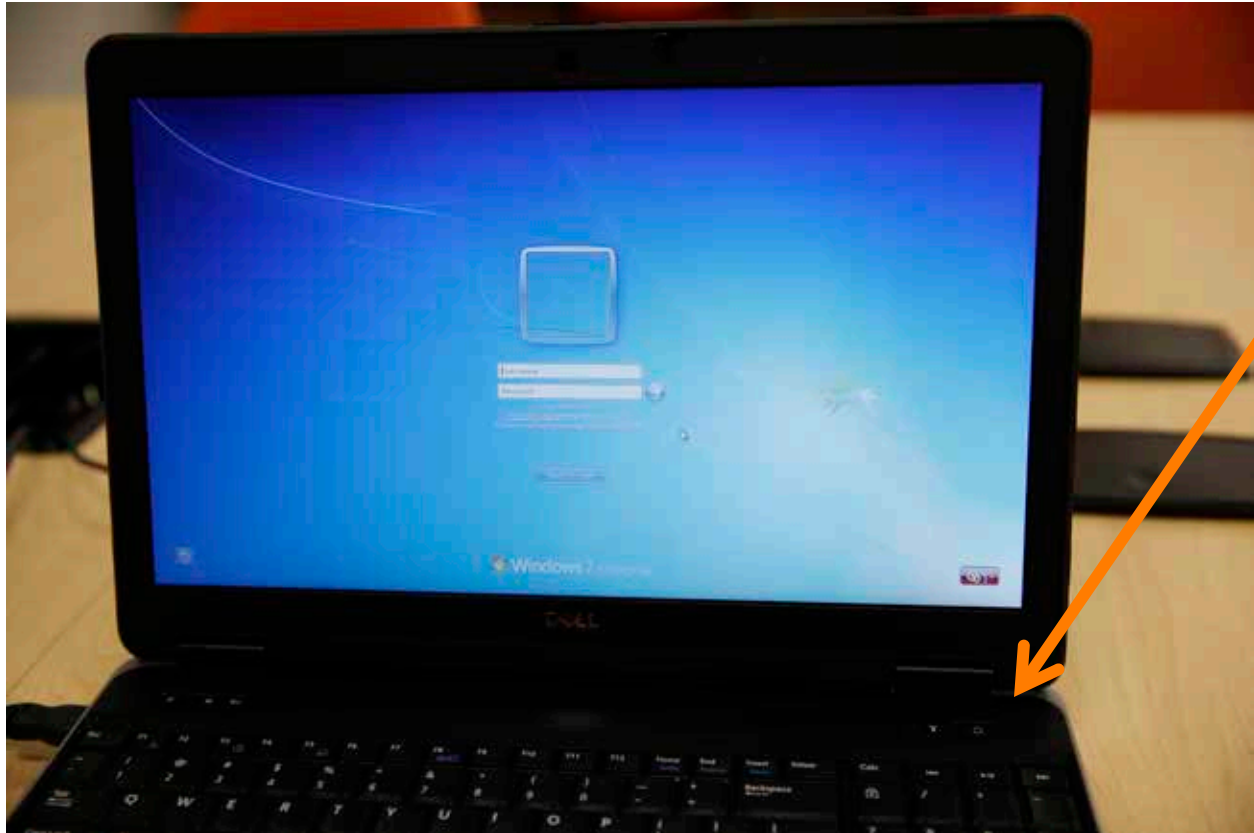
2.1 Screens will not turn on

Power the Crestron System down and back up:



2.2 Dell laptop will not display at screen

Power the laptop down and back up, using "Shut down" or the power button (not "Log out"):



2.3 There is no sound

You might need to change the default sound/playback output of your laptop. Check section 1.7: *Sound* for instructions.

You might be trying to play sound from a source that is not displayed on all screens. That will not work. The source has to be displayed on all screens to activate room speakers. Else, you will have to play the sound locally from your device.