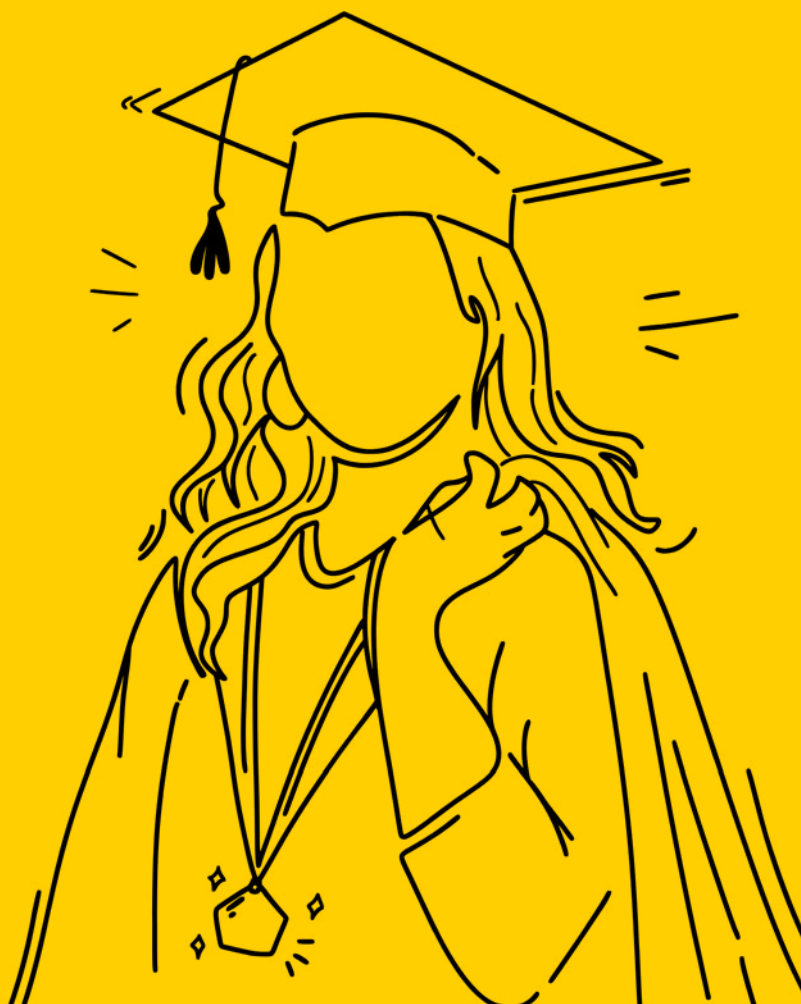




A CIBC X
ULETH
INITIATIVE

THE NAVIGATOR PROGRAM



ADDRESS

Anderson Hall 151
University of Lethbridge

CONTACT

www.uleth.ca/career-bridge
career.bridge@uleth.ca

ABOUT THE PROGRAM

“

*“The program truly opened doors and connected me to valuable work experiences. Excellent support and care from the program and Co-op coordinator will help you become **job ready** upon graduation.”*

Venus Xiong

(Fall 2022 Program Participant)

The CIBC Navigator Program at the University of Lethbridge enhances co-operative education accessibility for students with disabilities (SWD)

Through CIBC’s support, the program provides comprehensive resources and accommodations to boost academic and professional success, **welcoming all students registered with the University’s Accessible Learning Centre**



The program builds strategic partnerships with employers to develop quality co-operative education placements, ensuring meaningful opportunities that benefit both students with disabilities and participating organizations while providing ongoing support throughout the placement process



PROGRAM BENEFITS

Students participating in the CIBC Navigator Program actively engage in transformative learning experiences via their work-terms, noting the following:

- › reported an increase in social and community connection, bringing a greater sense of belonging
- › reported an increase in personal well-being through positive self-identity, sense of purpose and confidence
- › expressed increased engagement with overall academic and professional learning

Overall, Navigator students have a better chance of gaining meaningful employment after graduation



HOW TO ACCESS THE PROGRAM

Register With The ALC!

If you are a student with disabilities (SWD) but have not registered as such with the Accessible Learning Centre (ALC), you can do so by following these steps:

1. Book a consultation appointment with the Accessible Learning Centre through: disability.inquiries@uleth.ca
2. From there, you will be assessed and referred to a work integrated learning instructor capable of accommodating your needs and processing your admittance to the program

Already Registered?

If you are already registered with the ALC, please email us at career.bridge@uleth.ca to begin your program registration!



NAVIGATOR

CHART YOUR OWN PATH

ADDRESS

Anderson Hall 151
University of Lethbridge

CONTACT

www.uleth.ca/career-bridge
career.bridge@uleth.ca

