



University of
Lethbridge

Study Abroad in Taiwan – Fine Arts Students

With the University of Lethbridge International Centre

How Exchange Programs Work

Requirements

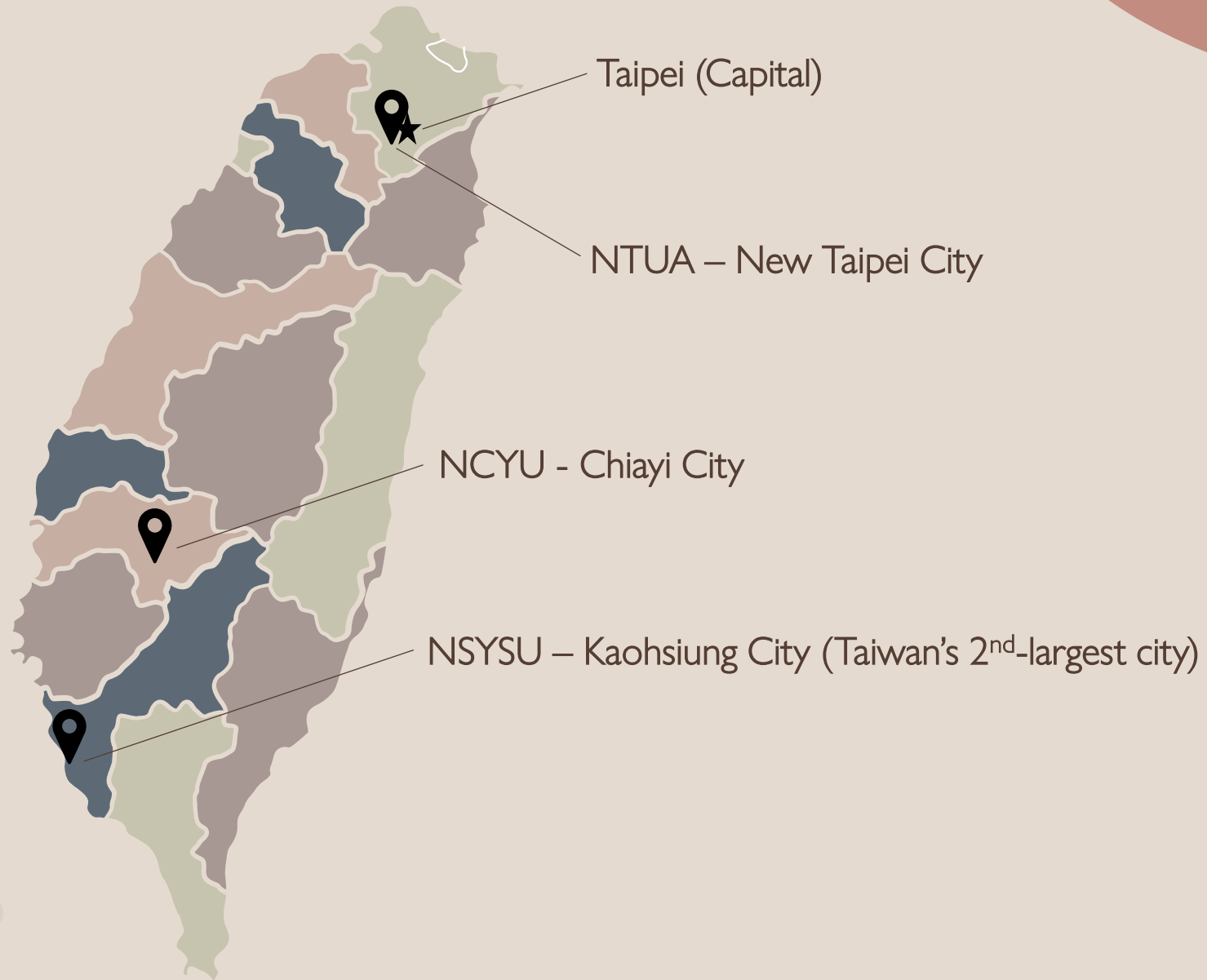
- **Full time** University of Lethbridge Student
- **Second year** standing (ten 3-credit courses complete) at the time of departure
- **2.5 GPA** or higher

Deadlines

- Winter: May 1
- Fall: November 1

You pay normal tuition rates to the U of L and receive transfer credit for 3-5 pass/fail courses.

Partner Locations - Taiwan



About Taiwan



- Population: 23.4 million
- Affordable housing, food, living costs
- Unique culture, traditions, food, festivals
- Modern cities, art, railway system
- Beautiful beaches and national parks – Taiwan has 5 main mountain ranges!
- Friendly, hospitable people
- Warm climate
- Close proximity for travel to East Asian countries

Why Go to Taiwan?



Beaches – Baishawan Beach, New Taipei City



Unique temples



Unique landscapes – Photo of Sun Moon Lake



Festivals – Spring Festival, Lantern Festival, Dragon Boat Festival, etc. Photo from a past U of L student who attended NSYSU

National Chaiyi University - NCYU

Location: Chiayi City

Semester Dates

- Fall: September – January
- Winter: February – June

On-campus housing: approx.

CA\$250/semester

- Up to 6 students per room. Air conditioning, internet, gym, study room, dance studio, and restaurant provided.



NCYU – Department of Music



See what classes as
a music student are
like at NCYU!

National Taiwan University of Arts (NTUA)

Location: New Taipei City

Semester Dates

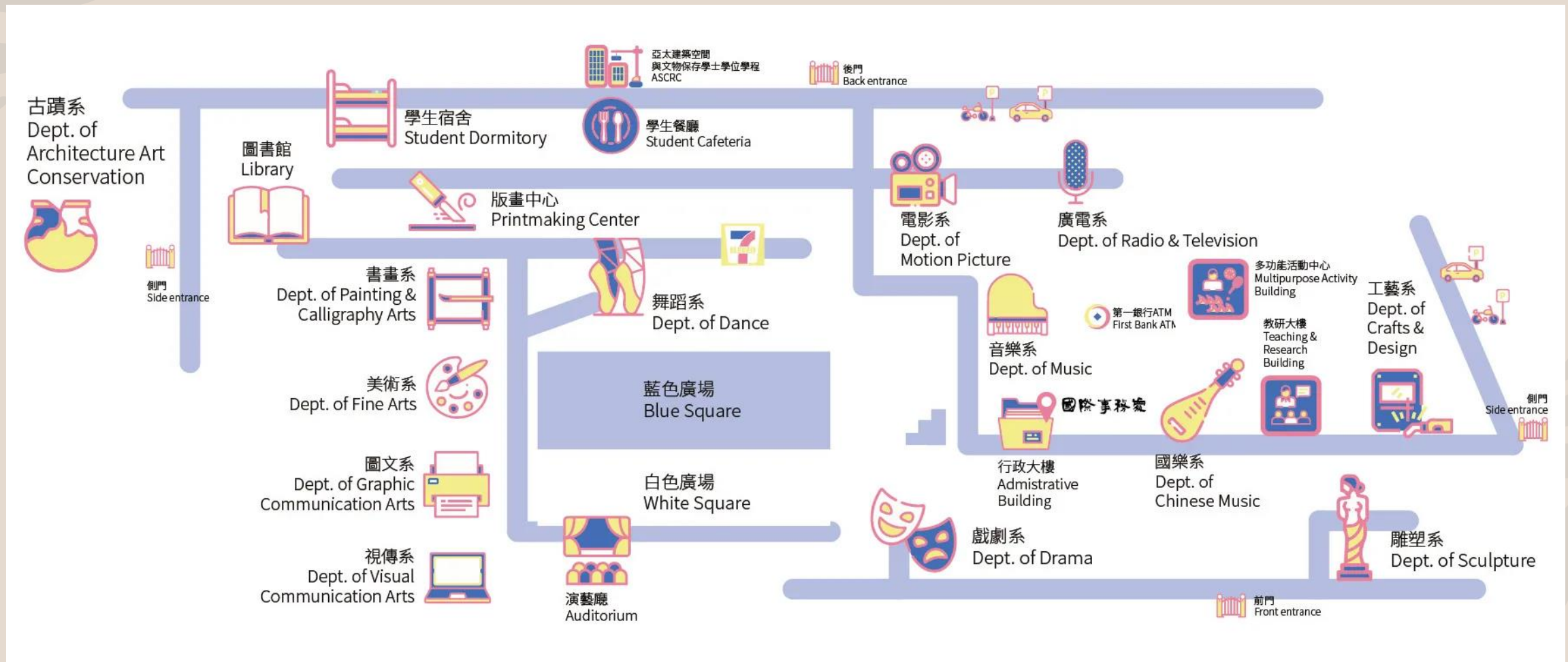
- Fall: Mid-September – Mid-January
 - Exchange students may apply for early leave due to early start at their home university (return for January U of L courses)
- Winter: Late February – late June

On-campus housing: approx. CA\$465/semester

- Shared rooms

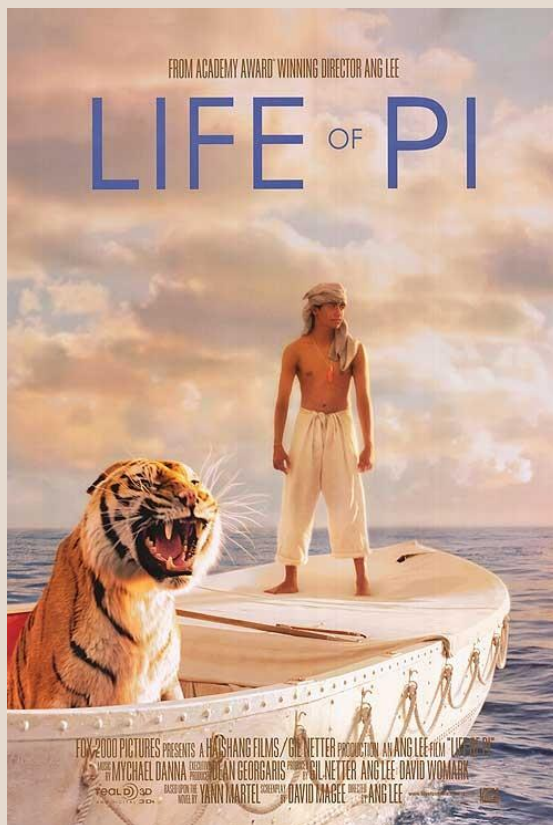


NTUA - Departments



[View a sample list of courses in English](#) tailored to exchange students *subject to change each semester*

NTUA – Distinguished Alumni



Ang Lee

NTUA – Student Life

- Student clubs
- Buddy program – paired with a local Taiwanese student “buddy” to help you navigate school and everyday life
- Organized trips and activities
- Access to campus facilities including
 - University museum
 - Performing arts centre
 - Research centre
 - Movie theatre
 - Multi-purpose activity centre – swimming pool, gymnasium, aerobics, yoga, badminton, table tennis
- Festivals – visual arts, contemporary arts, performing arts

Read how a student from [France](#) and the [USA](#) enjoyed their time at NTUA!

National Sun Yat-Sen University (NSYSU)

Location: Kaohsiung City (1.5 hours to Taipei by train)

Semester Dates

- Fall: Mid-September – late December
- Winter: Mid-February – mid-June

Beachside On-campus Dorms

- Double room – approx. CA\$800/semester
- [View photos of International student dorm rooms](#)

[View a sample list of courses in English](#) *subject to change each semester*



NSYSU – Student Life

- 3-credit Chinese language course offered
- Buddy program
- Activities for International students
 - Welcome Party
 - Cultural Exchange Session
 - Monkey Ecological Tour
 - Cultural Field Trips
 - Farewell Party
- Access to beaches
- Watersport activities (yachting, windsurfing, diving courses offered)

[Read testimonials](#) from exchange students about their time at NSYSU!



Available Funding

- There are a couple travel awards available each semester. Award amounts vary each year.
- Apply through The Bridge

Health and Dental Opt-Out Form

Full-time students with alternate insurance can use this online form to waive or opt-out of coverage provided by the Students' Union.

ULSU and GSA UPass Opt-Out Form

ULSU and GSA students registered in one or more classes, who meet the opt-out criteria, can use this online form to opt out of UPass.

Admissions

Check your admission status and required documents, transfer credit statement, and accept your Offer of Admission.

[Apply for uLethbridge Scholarships, Awards and Bursaries](#)

Check out our new online award applications!

Note: Please do not use Internet Explorer to complete your application(s) as you may encounter issues with that browser.

Textbook Express

View, print or purchase your textbooks from the U of L Bookstore.

Available Funding

Please indicate if you are planning on participating in one of the following experiences in the upcoming year:

- ☐ Work integrated learning
- ☒ In-person study abroad

Do you intend to travel for academic purposes (e.g. Internships, Exchanges, Workshops, Conferences) in the upcoming/current academic year?

- ☒ Yes
- ☐ No

If you answered yes and are travelling for academic purposes in your program, please indicate what semester in the upcoming/current academic year the travel will occur.

- ☒ Summer
- ☐ Fall
- ☐ Winter

*To have the opportunity to apply for travel awards this question must be answered. The **Graduate Dissemination Award** accepts applications year-round. **Undergraduate Travel** applications will open approximately two months prior to the deadlines below and will appear to you as a recommended opportunity. **UNDERGRADUATE DEADLINES:** Summer travel March 1 Fall travel July 1 Spring travel November 1*

Select in-person study abroad and choose the semester you were accepted on exchange for. Be aware of the deadlines listed.



Hi everyone! My name is Nadine, and I'm going to include a few ways I was able to engage with the arts while on my exchange! Even though I went to Budapest, Hungary (I would love to travel to Taiwan one day), my experience can give you an idea of the amazing opportunities that are out there for you to discover.

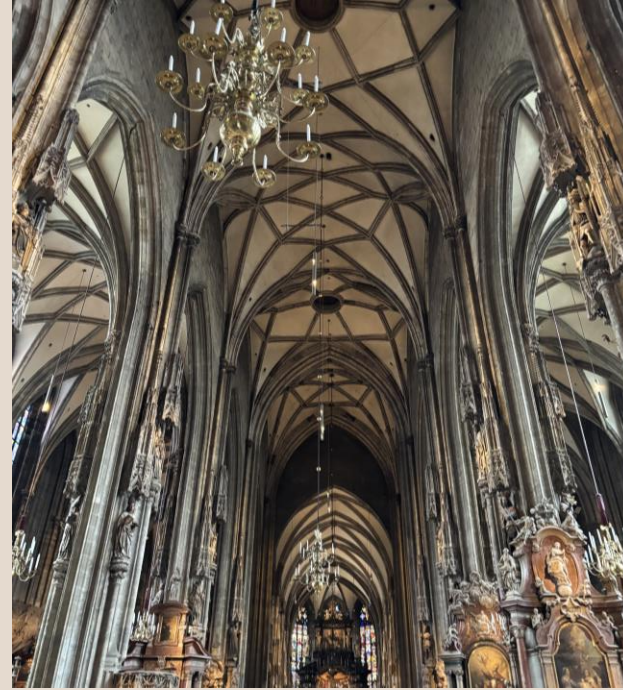


As an exchange student, you will have the chance to engage in many cultural activities outside of the classroom. There are so many opportunities you will get that are very different than here in Canada. I went to numerous opera and classical music performances in extravagant venues, learned some Hungarian folk dancing and singing, and visited countless museums and art galleries. And the best part is it was all extremely affordable as students often get significant discounts!

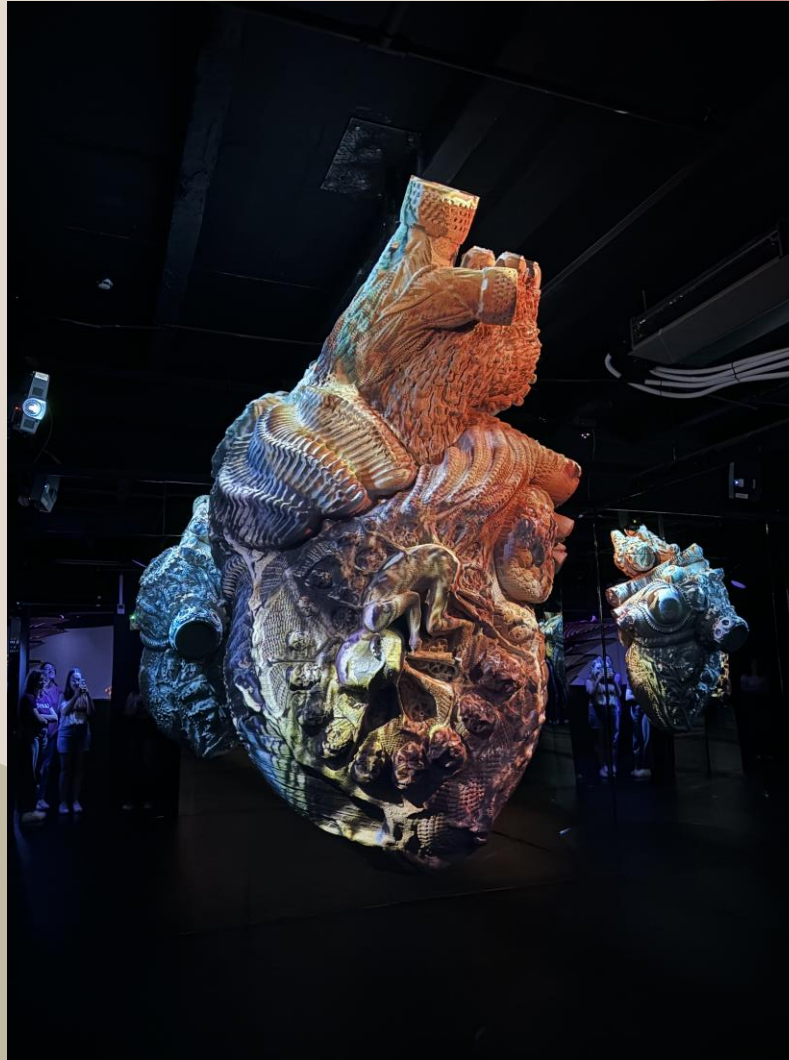


This was the library right across the street from my university that I would study in frequently. It was a repurposed palace with stunning architecture and interior design. And it only cost \$1.50 for a full year membership!





I had the opportunity to visit several cathedrals, basilicas, and other churches throughout my exchange. Every single one was unique and breathtaking. I had the chance to take an art history class where our professor took us to churches, galleries, and villas to teach about their history. Travelling to Taiwan would give you the opportunity to have a similar experience by visiting the beautiful temples across Taiwan and nearby countries!



I also visited a few modern art museums and installations across Budapest. Taiwan also offers many opportunities to engage with modern art in a different cultural context!

Beyond art, one of the best parts of my exchange was the friends I made from across the world! I did lots of travelling, ate a ton of new foods, learned lots about other cultures, and participated in so many activities that would have been out of my comfort zone in Canada. My exchange was the best semester I had in my degree, and I truly believe every student should do one! You will learn so much about yourself, grow immensely from the experience, and return with an expanded world view.



Want to Learn More About Exchanges?

Sign up for an info session at myexperience.uleth.ca

myexperience.uleth.ca/myAccount/EventCalendar.htm

OVERVIEW CO-OP RECORD MY DOCUMENTS JOB APPLICATIONS INTERVIEWS APPOINTMENTS EVENT R

Nadine Thyssen

Home
Deferral Request
MyExperience Transcript
Request Validation
Student Job Board
New Grad/Alumni Job Board
Co-op
EVENTS & WORKSHOPS
Book Appointments
Experiential Learning
Campus Programs
Student Resources
Logout

			2p Library - EndNote Part 1 (Online)	(ORIS) - Promoting Responsible and Ethical Research at ULEthbridge
				1:30p Library - Project Sandbox - So you want to learn Microsoft Word
26	27	28	29	
	1:30p Teaching Centre - Lesson Planning	9:30a Library - Project Sandbox - So you want to make a video with DaVinci Resolve	1:30p Library - Project Sandbox - So you want to learn Microsoft Word	
	2p Office of Research & Innovation Services (ORIS) - Promoting Responsible and Ethical Research at ULEthbridge	1:30p Library - Project Sandbox - So you want to create a 3D model with Tinkercad	2p International - ISMP Meet and Greet - ULEthbridge Campus	
		2p Library - NVivo Part 1 (Windows)	2p International - Learn about Study Abroad Opportunities including exchanges, study tours	
		2p Student Success Centre - Study Strategies	4:30a Career Bridge	
			WEBINAR: Becoming the Global You!	
2	3	4	5	
	1:30p Teaching Centre - AI Powered Technology in Teaching and Learning	1:30p Library - So you want to learn to code with Python: Beginner		
		2p Student Success Centre - Test-Taking Skills		



Thank You

QUESTIONS?

Gizelle Tiponut – Outgoing Exchange Coordinator

outgoing@uleth.ca

SU060

uleth.ca/international/outbound

