



MEETING OF
THE MINDS
2023

PROGRAM BOOKLET



University of
Lethbridge



Territorial Acknowledgement

Our University's Blackfoot name is Iniskim

Oki, and welcome to the University of Lethbridge. Our University's Blackfoot name is Iniskim, meaning Sacred Buffalo Stone. The University of Lethbridge acknowledges and deeply appreciates the Siksikaitsitapii peoples' connection to their traditional territory. We, as people living and benefiting from Blackfoot Confederacy traditional territory, honour the traditions of people who have cared for this land since time immemorial. We recognize the diverse population of Indigenous Peoples who attend the University of Lethbridge and the contributions these Indigenous Peoples have made in shaping and strengthening the University community in the past, present, and in the future.



SILENT AUCTION

Open for bids 9am-6pm

Who are we?

The Graduate Students' Association (GSA) is a student run **non-profit organization** that aims to ameliorate the Graduate student experience by hosting events such as "Meeting of the Minds" and **providing support to all graduate students** at the University of Lethbridge. To learn more visit: <https://ulgsa.org/>



Student Awards

This year, we are holding a silent auction where all proceeds will be put towards future **graduate student awards & hosting next year's Meeting of the Minds**. All items were donated by Lethbridge local businesses. This event would not be possible without the support of the community!



How to Bid

Below each auction item will be a bid sheet with the approximate value of each item listed. Bidding can begin at any amount however **bid increases must be in increments of at least \$10**. Auction item winners can pay by e-transfer, cheque, or cash.



Wanting to help but not interested in any auction items? Donations are accepted and will also be put towards the same cause!

Donate now:

E-transfer to: gsa.finance@uleth.ca



Order of Events

Platform Talks

- | | |
|------------------------------|---------------|
| ① Opening Ceremony | 9:15-9:50am |
| ② Platform Session I | 9:55-10:45am |
| ③ Coffee Break | 10:45-11:10am |
| ④ Platform Session II | 11:10-12:00pm |
| ⑤ Lunch + Images of Research | 12-1pm |
| ⑥ Platform Session III | 1:00-1:50pm |
| ⑦ Short Break | 1:50-2:00pm |
| ⑧ Platform Session IIII | 2:00-2:40pm |

Order of Events

Poster Talks + Gala

- | | |
|----------------------------|------------------|
| ⑨ Coffee Break | 2:40-3:00pm |
| ⑩ Poster Session | 3:00-5:00pm |
| ⑪ Keynote Speech | 5:00-5:20pm |
| ⑫ Dinner | 5:20pm |
| ⑬ Silent Auction | Closes at 6:00pm |
| ⑭ Three-Minute Thesis | 5:40-6:15pm |
| ⑮ Awards + Auction Winners | 6:15pm |

SGS Images of Research Contest

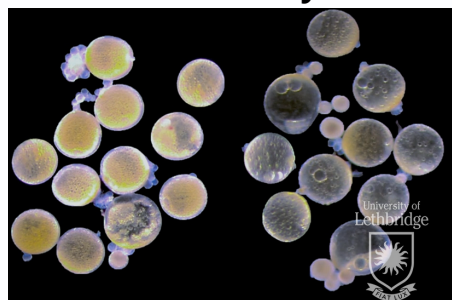
Aaron Veale



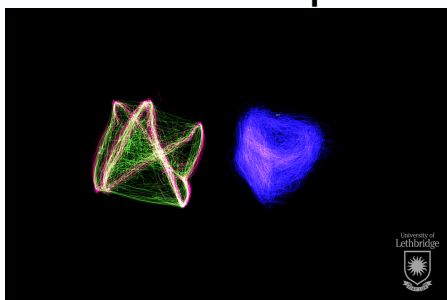
Jade Oldfield



Chloe Devoy



Kushaan Gupta



Abbe Pawluk



Amy Widenfield



Emma Neigel



Sally Sade

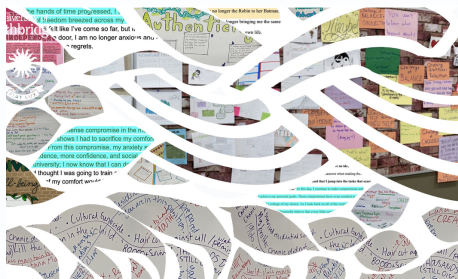


**Vote for your
favourite
photo!**



SGS Images of Research Contest

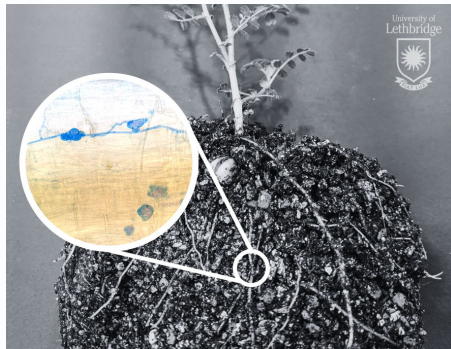
Liz Harrison



Thilini Maddegamgoda



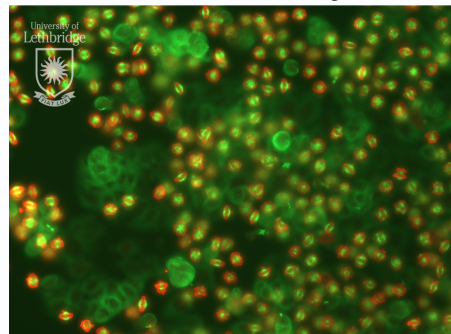
Melissa Telfer



Matthew Sawchuk



Shannon Healy



Kaegan Finn



Scan to vote for your favourite photo!



Vote for your favourite talk!



3MT[®]

**THREE
MINUTE
THESIS**

FOUNDED BY THE UNIVERSITY OF QUEENSLAND

Chloe Devoy

The Environmental Toll of Fire Control

David Robertson

Effects of Circadian Rhythm Disruption on Hippocampus

Heather Loewen

Magic Touch? How tactile stimulation on fathers prior to conception, can transcend generations and impact their babies' brains and behaviour

Jade Oldfield

Chess for Life: Building adolescent executive function through chess play

Kaylen Beekman

Are mitochondria the key to mental health?

KiAnna Sullivan

Mapping Neural Synchrony during Movie Viewing and fMRI

Keva Klammer

Investigating emotional processing mechanisms associated with migraine

Maleeha Panjwani

Multiple parallel memory systems in rodents: another addition?

Thomas Kenney

Second-hand dose: do antidepressants change the placenta?

Yagika Kaushik

Can environment enrichment improve cognitive skills in mice

Keynote Speaker

Kris Fisher

Kris Fisher is an instructor at the University of Lethbridge in the department of Chemistry & Biochemistry. Kris plays an integral role in many of our graduate students' programs providing vital training on many instruments and providing advisement on method development and validation.



Th

Enjoy the Experiment
est. 2015
Lethbridge, AB

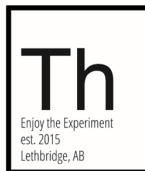
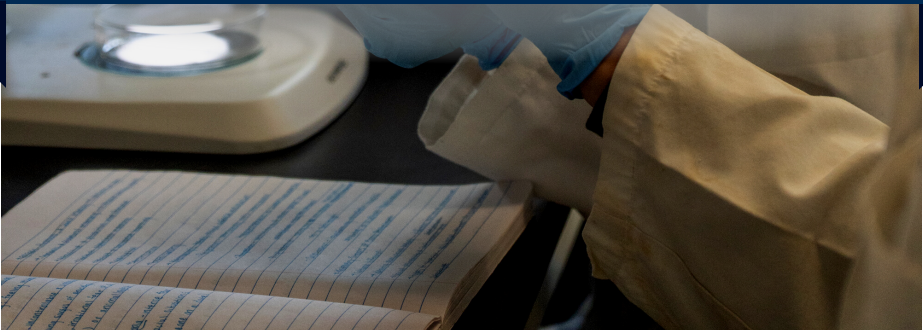
[Theoretically]
Brewing Company

Kris is also Co-founder of "Theoretically Brewing", a Lethbridge local Brewery known for some of its experimental brews. Kris came up with the idea of starting a brewery 15 years ago, however it was only in 2015 that provincial laws changed to make this dream possible. Medieval re-enactment is also a passion of Kris' – in fact, the suit of armour in this photo was made by him!



THANK YOU

TO OUR DONORS



UNITE
SPIN BARRE YOGA

[Theoretically]
Brewing Company



EGLOW



BOURBON
&
BUTTER

