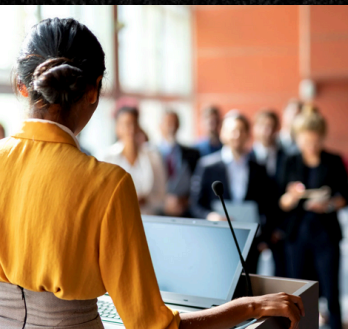




THIS COULD BE YOU!
LEARN.WORK.GROW.

**CO-OP IS WORK EXPERIENCE
RELATED TO YOUR STUDIES**



CO-OP FACTS

- 1.) For **best results** apply by January or September.
- 2.) **Try your degree** before you buy it.
- 3.) Earn competitive wages. Imagine earning \$40,000 - \$80,000 per year as a **full-time student**.
- 4.) Apply in 2 minutes or less @ **go.uleth.ca/me** (Sign in as a student).

University of
Lethbridge



CAREER|BRIDGE

Email **coop@uleth.ca** to learn more