

## Have you ever wondered where your family homestead was in Southern Alberta?

Maybe you'll find their name on one of these old maps.

### Alberta Homestead Maps - circa 1918

#### General Areas Covered on Each Map in #2 of 1918 Series

Map #5	Township 1 & 2 — Range 17 & 18	US border area - west of Milk River & Coutts
Map #5A	Township 1 & 2 — Range 19 & 20	US border area - west of Milk River & Coutts
Map #6	Township 1 & 2 — Range 21 & 22	US border area - south east of Cardston
Map #6A	Township 1 & 2 — Range 23 & 24	US border area - south east of Cardston
Map #7	Township 1 & 2 — Range 25 & 26	US border area - south & southwest of Cardston
Map #7A	Township 1 & 2 — Range 27 & 28	US border area - south & southwest of Cardston
		Credit: Cummins Rural Directory Map

## Would you like to see what the area looks like today?

Any parcel of land in Alberta can be located by its legal land description which is based on the Alberta Township Survey system. It is a grid network dividing the province into equal-sized parcels of land.

Rotate the maps (if necessary) so a side column shows the Township (Tp) number.

Provide us with the **township number** (on the side column) and the **range number** (R - on the bottom of the map) **along with the name you are interested in.**

Send a check for \$30 U.S. (\$35 Can.) and \$10 U.S. \$12 Can.) for each additional name to:

Historical Research Centre

1115- 8 Ave. S.

Lethbridge, Alberta, Canada T1J1P7

Phone 403 328 3824

We will send you in jpeg form: (or hard copy if you prefer snail mail)

**1 —A topographical map view of the area.**

**2 —A google earth view from space of the area today**

**3— Directions on how to reach the site**

**Check out the next page to see an example.**

## Here is an example of what you get:

Let's say you wanted to find the site of the old Pearce Air Base where air crew from across the British Commonwealth were trained during World War II.

Once you tell us the township and the range numbers we will send you the following in jpeg form. (or hard copy if you prefer snail mail)

### 1 — A topographical map view of the area.



### 2 — A google earth view from space of the area today



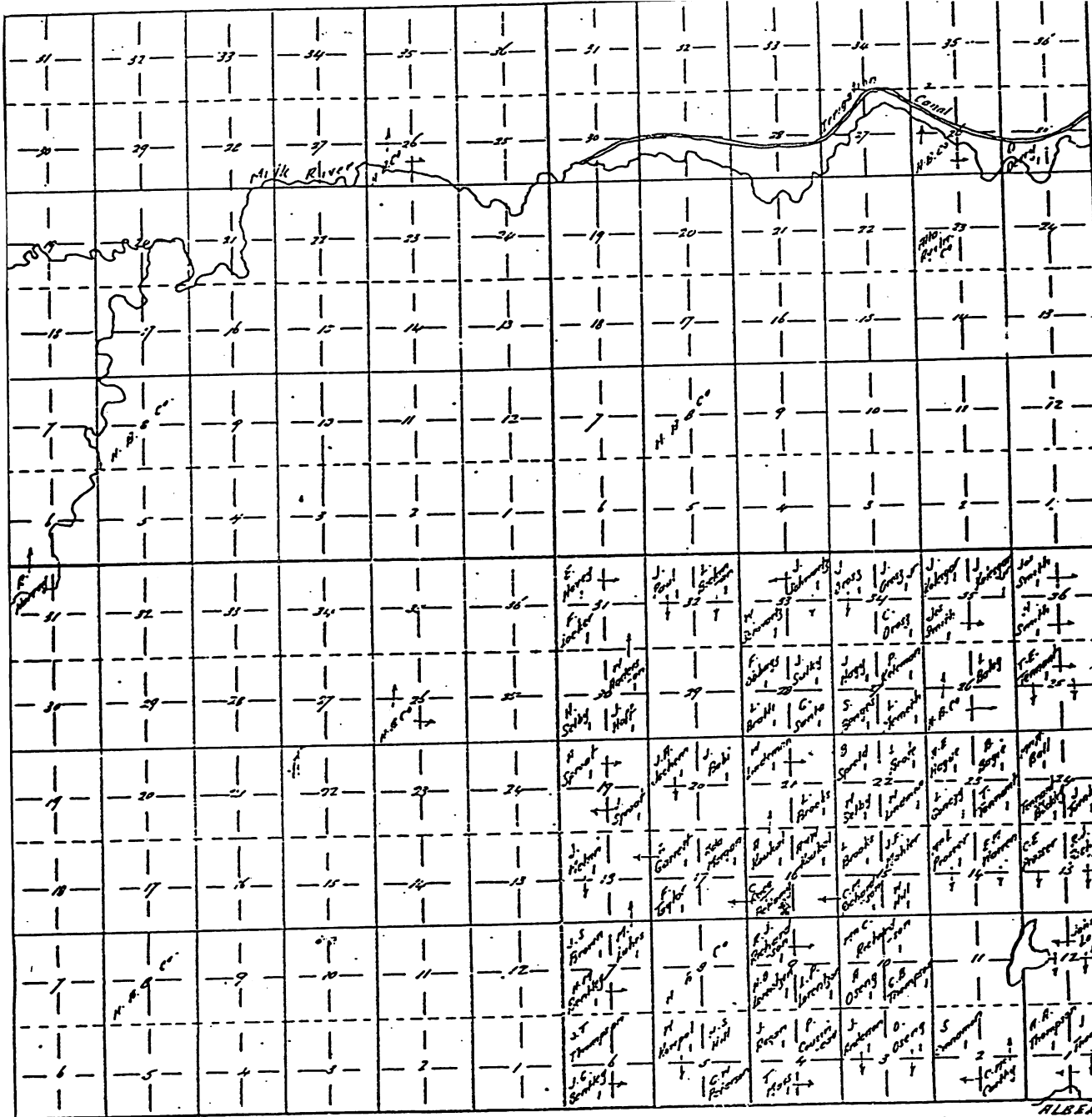
### 3 — Directions on how to reach the site

<b>Start address:</b>	<b>49.633686, -112.791309</b> +49° 38' 1.27", -112° 47' 28.71"
<b>End address:</b>	<b>49.834970, -113.253753</b> +49° 50' 5.89", -113° 15' 13.51"
<b>Distance:</b>	30.6 mi (about 39 mins)

[Reverse directions](#)

1. Head **east** - go **0.2 mi**
2. Turn **left** at **HWY-5** - go **1.5 mi**
3. Continue on **Mayor Magrath Dr S** - go **2.9 mi**
4. Take the **HWY-3 ramp to Ft MacLeod/Calgary/Medicine Hat** - go **455 ft**
5. Take the **HWY-3 W ramp to Ft MacLeod/Calgary** - go **23 mi**
6. Turn **right** at **Range Road 250** - go **3.4 mi**
7. Arrive at **49.834970, -113.253753**  
+49° 50' 5.89", -113° 15' 13.51"

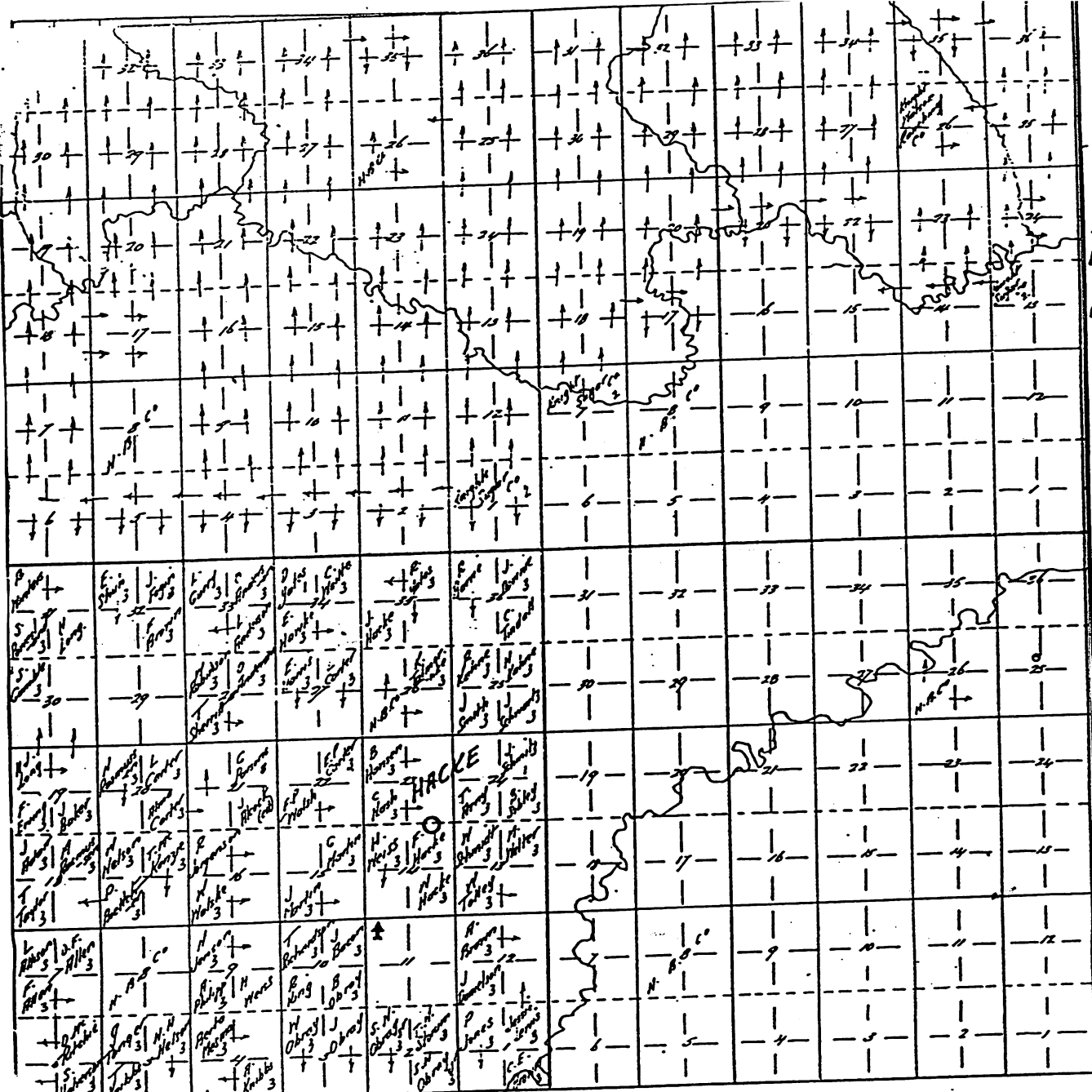
A map showing the route from the start address to the end address. The route is highlighted in blue and yellow. It starts near Fort MacLeod, goes east on HWY-5, then south on Mayor Magrath Dr S, then west on HWY-3, and finally south on Range Road 250. The map includes labels for Nobleford, Coalhurst, and Lethbridge.



th M. 1 MILK RIVER  
2. RAYMOND  
3 HACKS

R.18

R.17 SUMMERS Map Co.  
WINNIPEG, MAN. 11-5



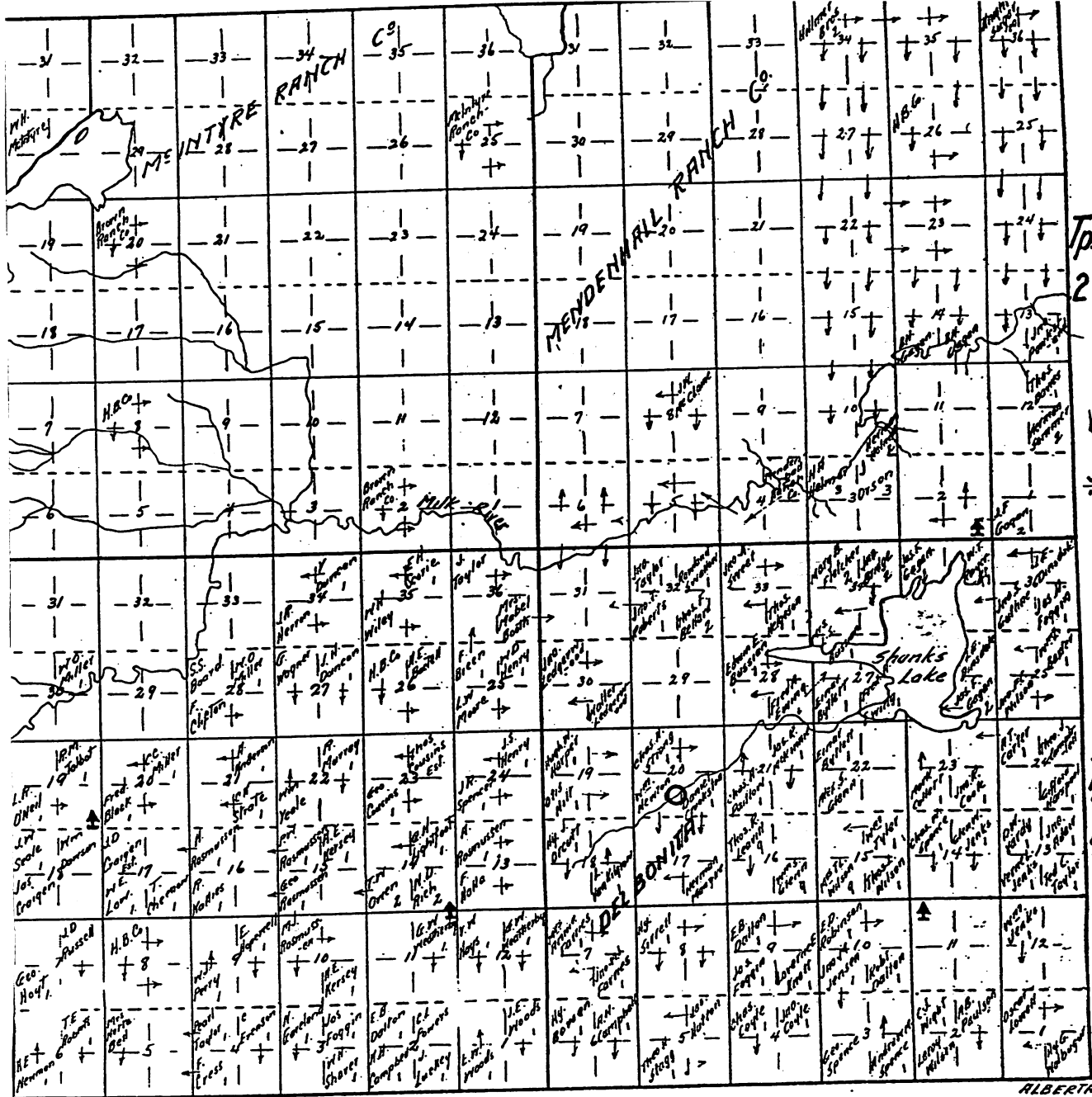
Tp.  
2

Tp.  
1

R. 20

R. 19

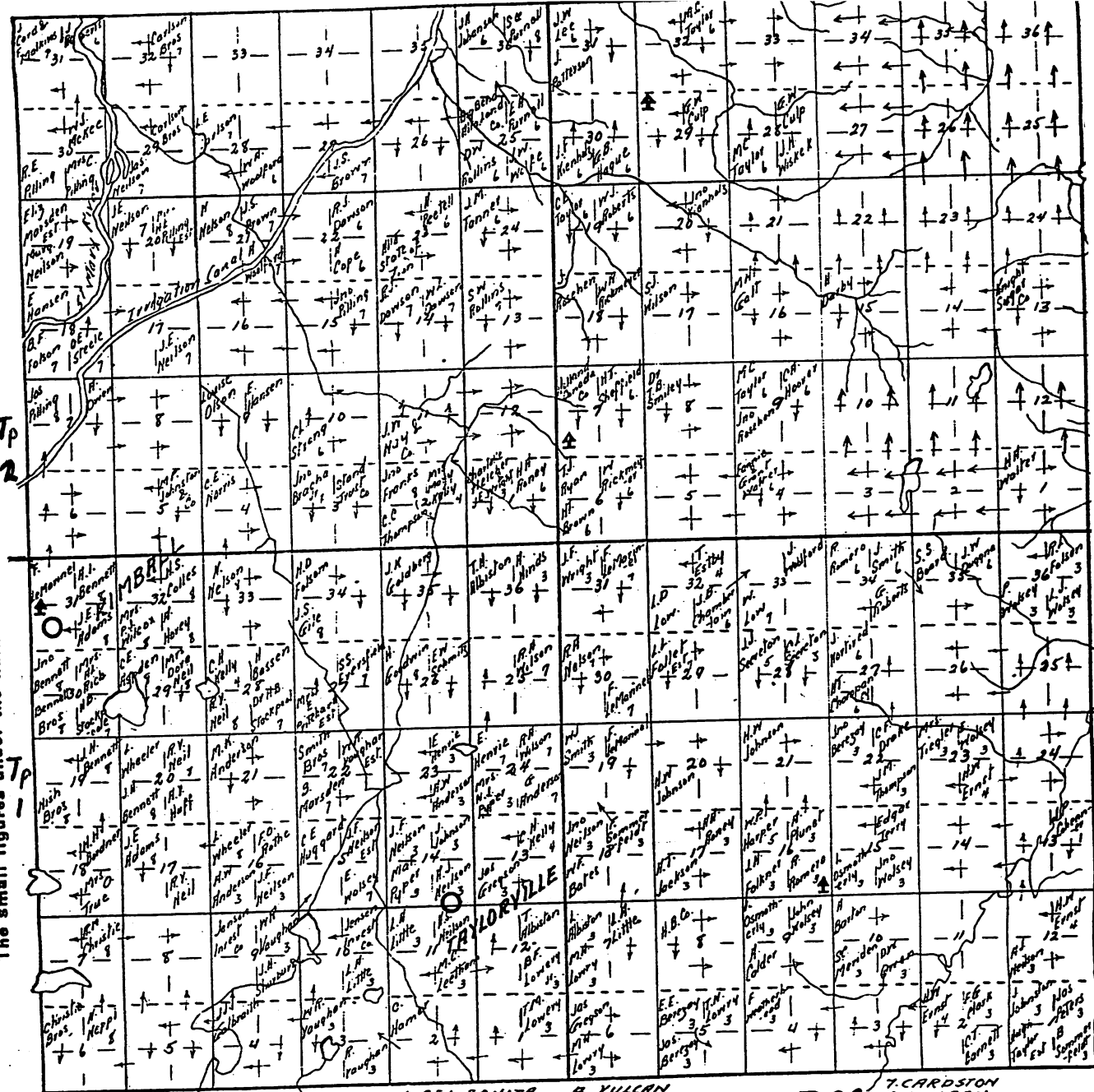
W. of 4



TP  
2

TP  
1

The small figures under the name indicate the number of the Post Office.



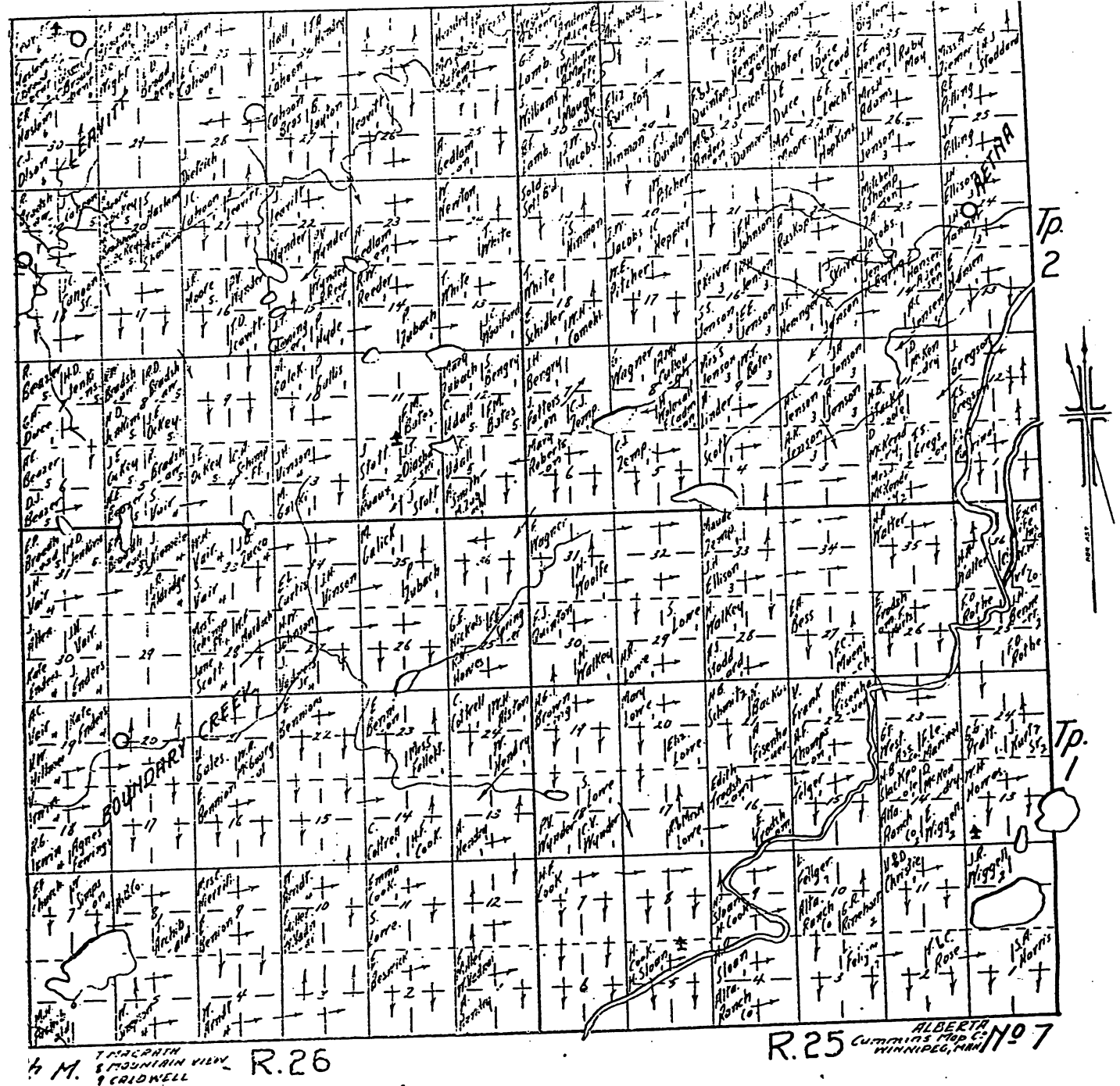
R. 24

1. DEL BONITA  
2. FAHRENH  
3. TAYLORVILLE

4. YULCAN  
5. KIMBAIL  
6. WOOLFORD

R. 23

7. CARDSTON  
8. KIMBAIL  
9. LEAVITT



4 M. T. MCGRATH  
8 MOUNTAIN VIEW  
9 CROD'WELL R.26



TP.  
2

TP.  
1

